

NOTICE TO MARINERS

Lowestoft – Outer Harbour - Sladdens Pier **Construction Activities – Final Update**

UTC BST

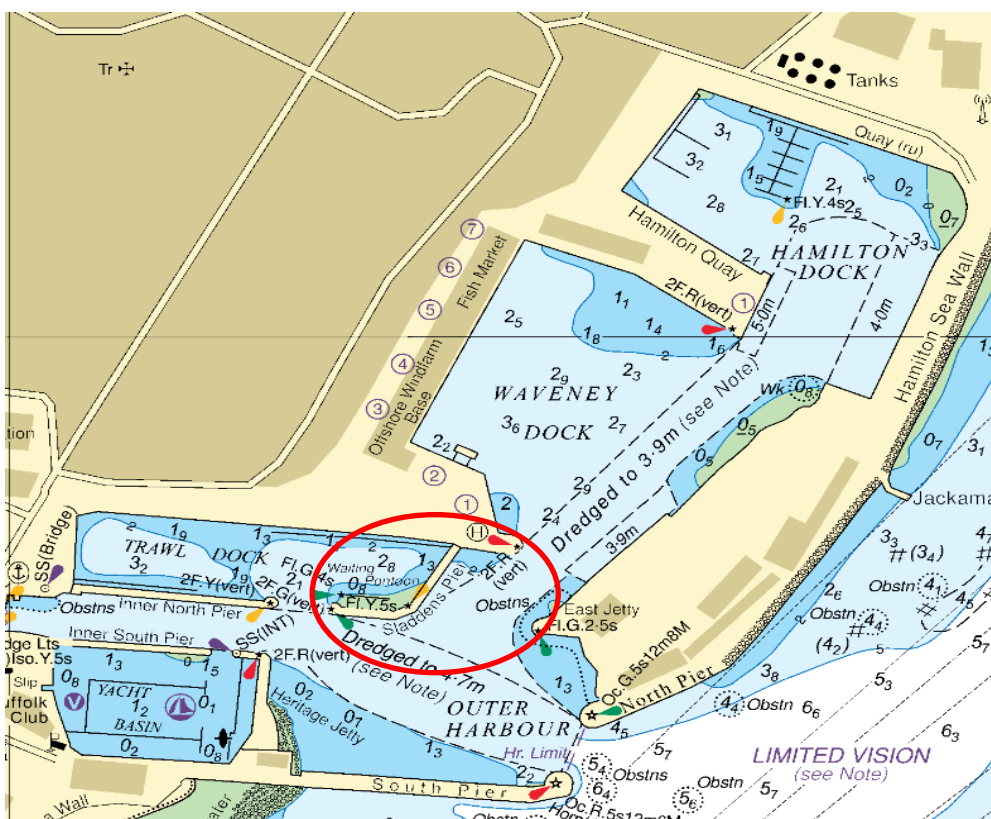
Mariners and port users are advised that piling operations have now been completed on Sladdens Pier. The jack up and pontoon barges have now been moored back alongside former SLP South load out berth for de-mobilisation.

Construction related activities will continue but will be undertaken from Sladdens Pier.

The waiting pontoon has been re-instated in the SE corner of the Trawl Dock. This should now be used for all small craft and leisure vessels waiting for a Bascule Bridge opening. The Heritage Quay should no longer be used for this requirement.



Waiting Pontoon SE corner of Trawl Dock



Location of Sladdens Pier extract from BA1535 – highlighted in red

This notice supersedes NTM No.45b 2022 and self-cancels 30th November.

Please contact Lowestoft Port Control – VHF Ch14, Tel. 01502 572286 (Option 3), if further information is required.

Divisional Harbour Master East Anglia

10 November 2022

Notice to Mariners Currently in Force:

2006 No.5 **2007** No.13 **2009** No.19 **2011** No.7, No.10 **2012** No.3, **2013** No.17, No.19, **2015** No.24 **2016** No.12 **2017** No.5, No.22, No.24, No.32 **2019** No.2, No.18 **2020** No.17, No.24, No.26, No.29, No.40, No.43, No.44, No.47, No.50, **2021** No.01, No.40, No.51, No.54, No.57, No.58, **2022** No.1, No.2, No.25, No.26, No. 35, No.42c, No.43, No.45c, No.48

Lowestoft | Wales & Short Sea Ports | Associated British Ports | Lowestoft | Station Square | Lowestoft | NR32 1BA | +44 (0) 1502 572286