

# The Ports of Ipswich and Lowestoft

The Gateways to Sizewell C



**ABP** | ASSOCIATED  
BRITISH PORTS



**Sizewell C**  
The power of good for Britain

ENABLING THE ENERGY TRANSITION

# Foreword



**Julian Walker**

CCO and Regional Director, ABP

**As the construction of Sizewell C takes shape over the next nine years, the supply chain demands for construction materials and components will be significant and multifaceted.**

ABP's East Anglian ports in Ipswich and Lowestoft are strategically positioned to meet these demands, offering unparalleled advantages for businesses seeking an efficient and supportive base for their operations.

The proximity of our ports to the Sizewell C site is unmatched. The Port of Lowestoft being the closest port, provides a critical logistical link. With rail connectivity at both ports, ABP is well positioned to play a role in meeting Sizewell's commitment to transport at least 60% of all construction materials by rail or sea.

More broadly, ABP has extensive experience in the energy and nuclear sector, demonstrated through our involvement in numerous projects across the UK including Hinkley Point C and BAE, positioning us as a reliable partner in the construction of Sizewell C.

Our ports are equipped with secure storage facilities that are capable of handling vast quantities of aggregate and specialist materials, we have seen a consistent increase in cargo volume across core commodities, which is a testament to our continued investment in infrastructure and services tailored to meet the evolving needs of our customers. This is alongside superb quayside infrastructure that is designed to support the discharge of heavy and complex cargo.

Working with ABP means choosing a partner with a proven track record of operational excellence, strategic location and a commitment to investment and innovation. We look forward to talking with any potential suppliers of Sizewell C about providing a bespoke solution, which meets the highest standards of safety and customer service.



# Flexible Logistics Support

ABP is the UK's largest port operator, with 21 ports across England, Scotland and Wales and has earned a reputation for its flexible approach to supporting the supply chain for key capital projects.

**ABP's Ports of Ipswich and Lowestoft offer:**



**Unrelenting commitment to safety**



**Close proximity to Sizewell C site**



**Multimodal connectivity**  
(road, rail and sea)



**Deep water access**



**24/7 port security**



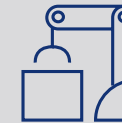
**Experience of handling heavy lift and project cargoes**



**Temporary dock-side space**



**Design and construction of bespoke accommodation on port**



**Expert handling of all the materials required for the construction of a nuclear facility**

Lowestoft



Sizewell C

## Our Ports of Lowestoft and Ipswich are a Gateway to Sizewell C

Ipswich





# The Port of Ipswich

The Port of Ipswich, situated at the head of the River Orwell, is a hugely **significant port for both the agricultural and the construction industry.**

It currently handles over **2.5 million tonnes of cargo**, including aggregate and cement each year and has been the **UK's leading grain export port** for 19 consecutive years. In 2023 alone, **631,000 tonnes of agricultural commodities** were exported through Ipswich, representing roughly **23% of the total UK market share.**

## Key advantages:

Proven experience  
with project cargo/  
general cargo operations

Marine  
capabilities



# The Port of Ipswich strategically located



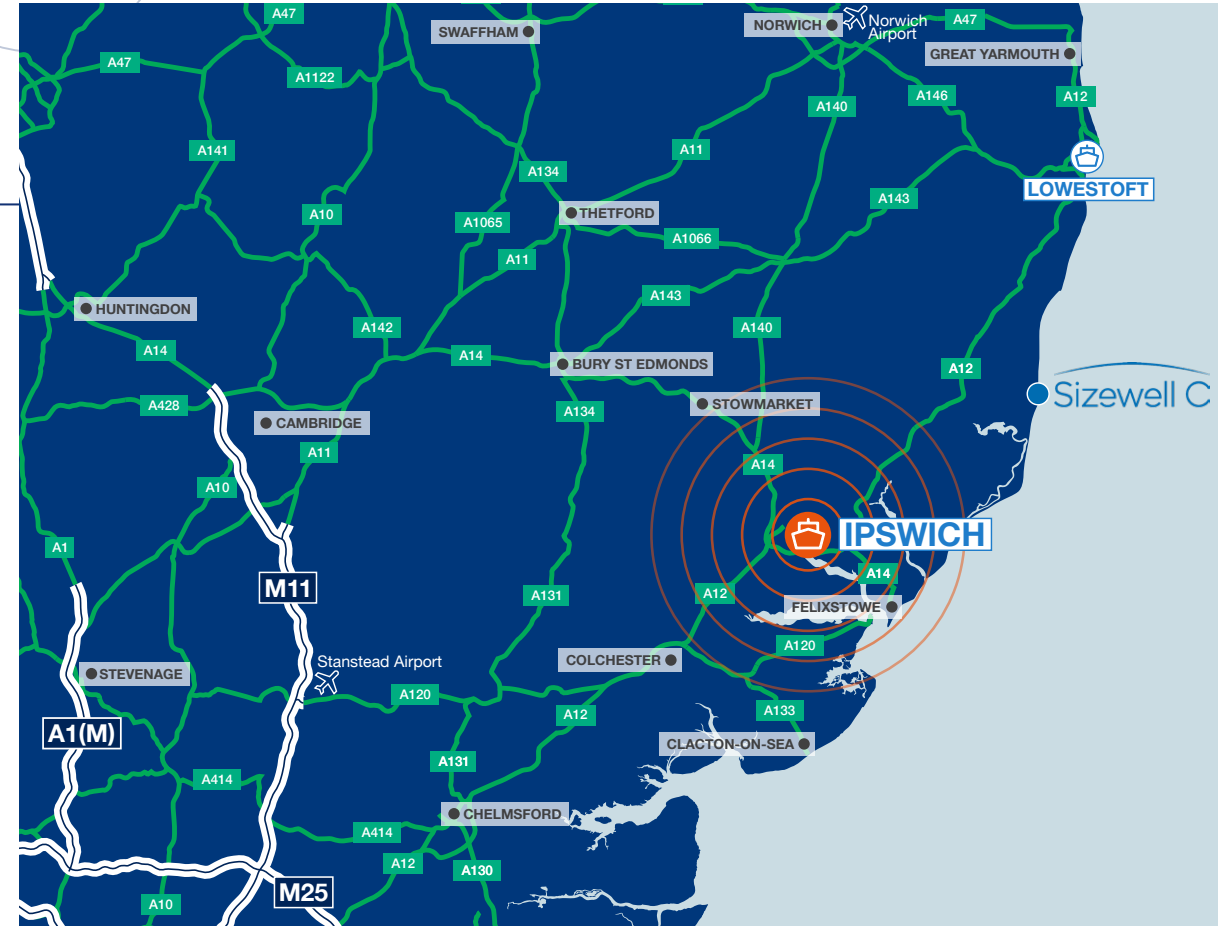
Strategically situated just **37 miles** by road from Sizewell C, the port's proximity combined with its **connectivity to the A14** makes it an ideal choice for truck transport to the site.



The port's West Bank features a **rail link directly connecting to the Sizewell C** site. Given the constraints on road transport, this rail option presents an efficient solution for bulk material movement.



At only **33.5 nautical miles** from Sizewell C, the Port of Ipswich offers minimal vessel travel times, enhancing its suitability for deliveries to both the MBIF and BLF.





# The Port of Ipswich and Sizewell C

EDF has **secured a land option agreement for 15 acres** at the Port of Ipswich. Located on the port's West Bank, this site is ideal for a **tri-modal approach to Sizewell delivery**. It allows goods to be transported by vessel, road, and rail.



**15 acres** on the  
West Bank

# The Port of Ipswich and Sizewell C

The West Bank's **rail connectivity** makes it **suitable for bulk material deliveries**, making it an excellent candidate for a 'virtual quarry'.

In addition to this land option, Sizewell operations are not confined to this area alone. With over **100 acres of operational land available** on both the eastern and western sides, the Port of Ipswich is **well-suited for a variety of activities**, including general cargo, project cargo, steel, aggregates and more.

More **land can be made available** for additional projects, if required.

**Minimizes transit distances** and times by road (33 miles), rail or sea (8 hours) to project site, helping reduce CO2 emissions.

**Flexible rail layout planning** to accommodate high frequency rail movements as well as any client requirement for wagon storage.

**Rail side space for multiple bulk silos** with 10m apron for hopper, weighbridges and HGV access.

**Minimal shunt distances from rail or ship** to multiple segregated bulk storage bays to support significant and high volume bulk product movements.

**Proven ABP expertise** to optimise the efficient transfer of products from rail or ship to store, silo, road and vice-versa.

**Around the clock access** to multiple berths for frequent vessel and barge activity.

## Port of Ipswich

West Bank Virtual Quarry Concept



A multi-user facility for the storage and distribution of bulk products, by sea, road or rail to the SZC project.



# The Port of Lowestoft

The Port of Lowestoft – the **closest port to Sizewell C** – is emerging as a thriving centre for companies servicing the offshore energy industry and offers highly-skilled teams equipped to safely and efficiently handle a wide range of cargoes.

ABP has invested circa. **£35m in the Lowestoft Eastern Energy Facility (LEEF)** – a major port redevelopment project in the Outer Harbour, giving Lowestoft **state-of-the-art port infrastructure**, more **quay side space** and **deep-water berthing**.

The Port of Lowestoft is the **statutory harbour authority** as well as providing **pilotage for visiting vessels**. Ideally located to manage the BLF, MBIF and other marine activities for SZC.



**250,000 tonnes**  
of cargo handled through  
the port annually

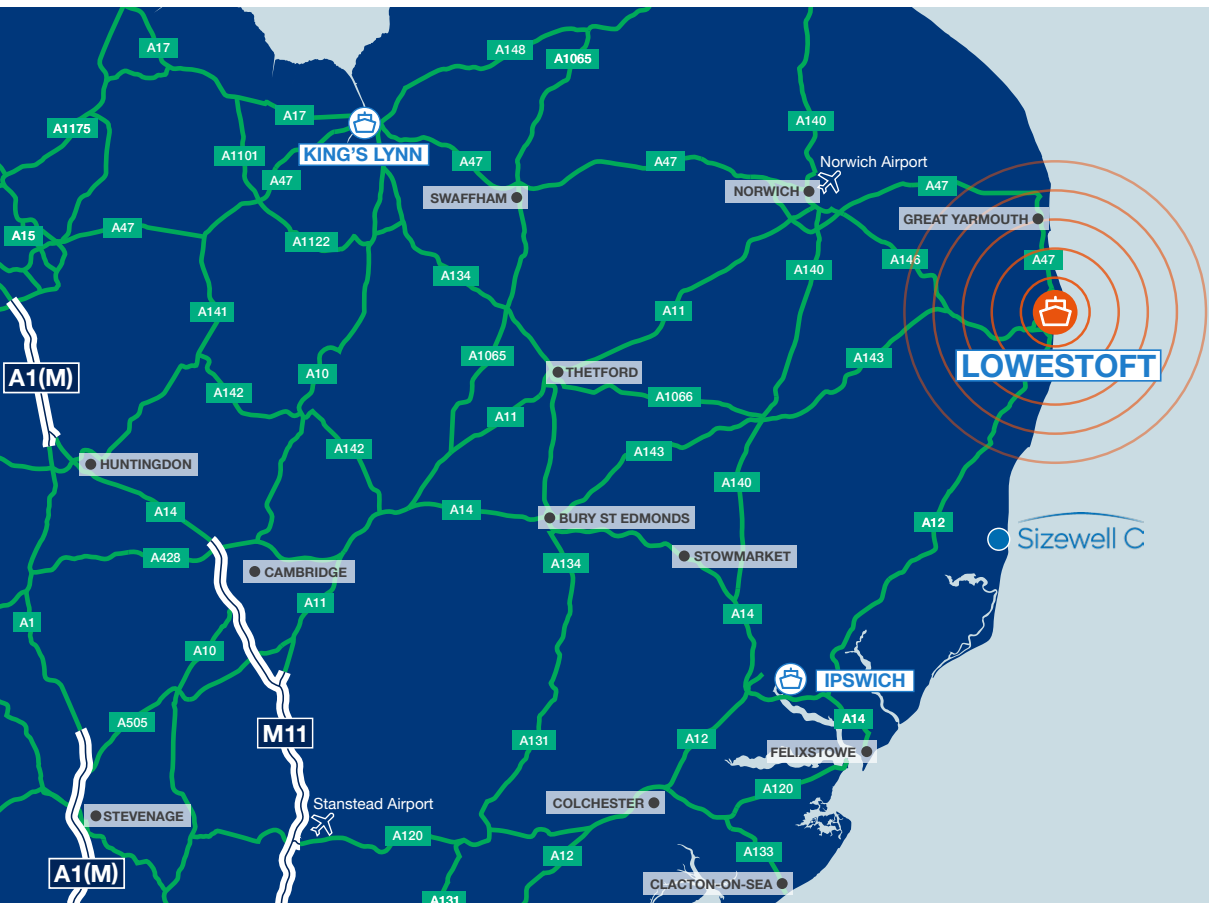


**5,400**  
vessel calls  
each year

**Already underway...**  
Direct Air Capture (DAC)  
demonstration project  
under construction



The Lowestoft Eastern Energy Facility (LEEF)



## Lowestoft the closest port to Sizewell C by road



The nearest port to Sizewell C by road is **just 28 miles away**, offering nearly direct access via the A12. This proximity makes the port an appealing option for the **swift and efficient transport** of materials to the site.



The port is advantageously positioned with an **adjacent rail line that can be extended into the site**. This infrastructure could accommodate the loading of a 25-wagon train, **significantly enhancing logistics capabilities**.

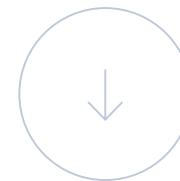


Situated a mere **20 nautical miles from Sizewell C**, the Port of Lowestoft ensures minimal vessel travel time, thus increasing its viability for deliveries to both the MBIF and BLF. The short maritime distance makes Lowestoft **an ideal choice for barge deliveries to the site**.

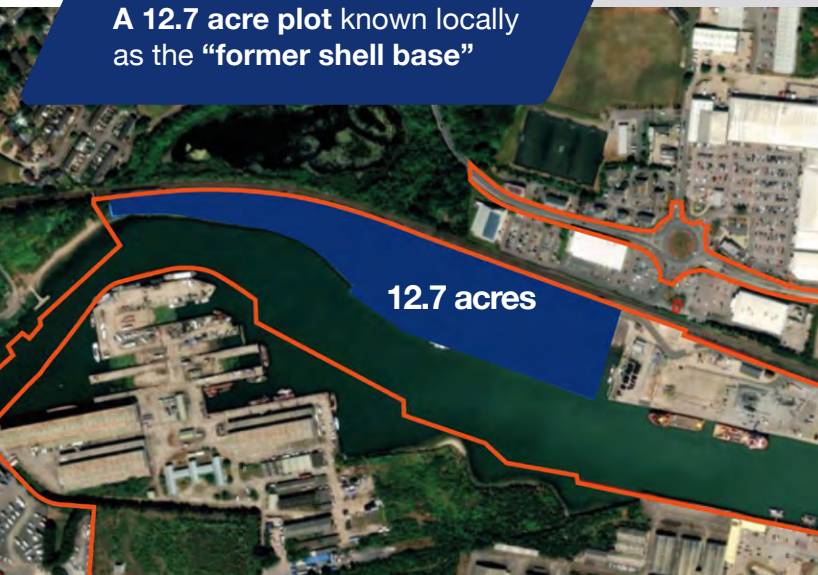


# The Port of Lowestoft and Sizewell C

EDF has secured a land option agreement for two parcels of land at the Port of Lowestoft



A 12.7 acre plot known locally as the “former shell base”



2.3 acres



2.3 acres on Belvedere Road

However, the port has **more operational land available outside of the land options**, including the Lowestoft Eastern Energy Facility (LEEF). **LEEF is a new £35m redevelopment** in the Outer Harbour of Lowestoft.

This new redevelopment has given Lowestoft **300m of new quayside deeper water of 7.5m, and 6 acres of newly developed land** which could be **used for any SZC operation**.



# Get in Touch

We are happy to help with all enquiries  
and provide tours of our ports and facilities.

**Please do not hesitate to get in touch.**

**Paul Litten**

Head of Commercial W&SSP

T. 07595 190 577

E. [plitten@abports.co.uk](mailto:plitten@abports.co.uk)

**Dan Whysall**

Commercial Manager

T. 07884 476 188

E. [dan.whysall@abports.co.uk](mailto:dan.whysall@abports.co.uk)

**Harriet Copley**

Commercial Manager

T. 07756 269 429

E. [harriet.copley@abports.co.uk](mailto:harriet.copley@abports.co.uk)

**Roshan Gore-Samad**

Assistant Commercial Manager

T. 07897 276 789

E. [roshan.gore-samad@abports.co.uk](mailto:roshan.gore-samad@abports.co.uk)

**ENABLING THE ENERGY TRANSITION**