

NOTICE TO MARINERS

Lowestoft Inner Harbour – Gull Wing - Marine Construction Activities North and South Sides of Lake Lothing – Amended Light and Beacon Positions/Details

UTC BST

Mariners and Port Users are advised of continued construction activity in Lake Lothing in the vicinity of the Gull Wing Bridge crossing.

Piling activities from barges continue North and South sides.

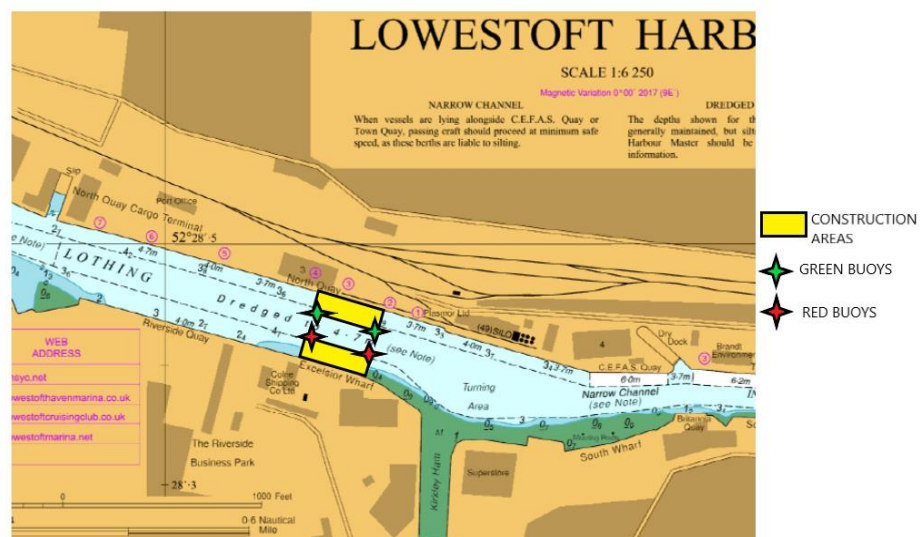
Construction will be focussed in the areas shaded yellow on the below chart extract. Port and stbd hand lighted buoys are in position West of the construction activities, and Light beacons have been attached to the piles closest to the channel at the Eastern sides of the construction. Approx. positions are indicated on the below chart extract. Actual buoy positions are as follows:-

Fl.G 2.5s NW Buoy Position = 52°28'26.73"N 001°44'10.86"E

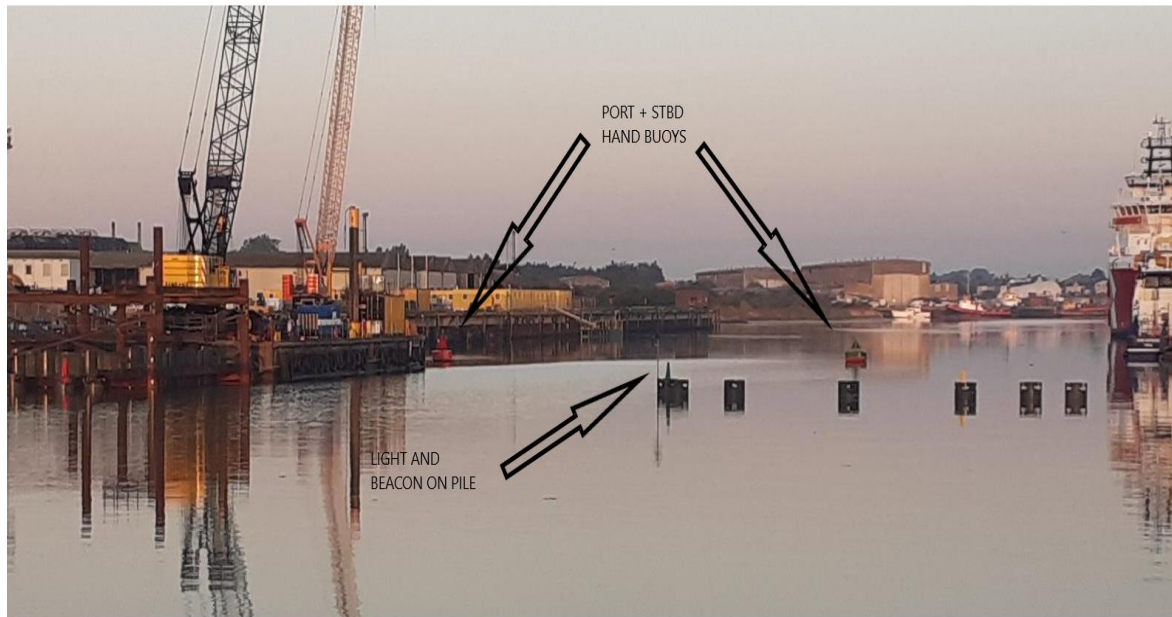
Fl.R 2.5s SW Buoy Position = 52°28'25.70"N 001°44'10.37"E

Fl.G 2.5s NE Beacon Position = 52° 28' 26.04"N 001° 44' 15.03"E

Fl.R 2.5s SE Beacon Position = 52° 28' 24.93"N 1° 44' 14.49"E



Construction Work Areas and approximate buoy/beacon locations



Gull Wing Construction Area

The navigation channel in this area is 32m wide. There may be occasions during barge repositioning, when the barges or other marine plant encroach into this channel area. These encroachments are only anticipated to be by up to approx. 5m and scheduled so that they do not coincide with any large commercial vessel movements. Please check with Lowestoft Port Control for details of any variances to channel availability.

The piles as installed are only at approximately 0.2m height above the MHWS mark. There will be times when the barges are either working only North or South sides of the Lake, so piles may only just be visible above the water over HW during day, and barely visible at all at night regardless of state of tide. **It is therefore essential that Mariners only pass between the red and green buoys/beacons to keep clear of the piles and any other marine obstructions in the shaded yellow areas.**

As an additional precaution (to try to highlight the presence of the piles) there will be a small lit special mark buoy placed in the centre pile (Qk Fl.Y), also poles with yellow cross top marks affixed to piles between the special mark light and the quay, and between the special mark light and the channel light (configuration as per below photograph).



NE Dolphin AtoNs

Vessels involved with construction will be monitoring VHF Ch 14. Barges will be illuminated during the hours of darkness.

All vessels are requested to navigate with extreme caution when transiting this area, and to pass the construction site at slow speed to reduce the effects of vessel wash.

This notice supersedes notice No.39 – 2021 which is hereby cancelled.

Please contact Lowestoft Port Control – VHF Ch14, Tel. 01502 572286, if further information is required.

Divisional Harbour Master East Anglia

29 September 2021

Notice to Mariners Currently in Force:

2006 No.5 **2007** No.13 **2009** No.19 **2011** No.7, No.10, No.19 **2012** No.3, **2013** No.17, No.19, **2015** No.24 **2016** No.12 **2017** No.5, No.22, No.24, No.32, No.34 **2018** No.34, **2019** No.2, No.18 **2020** No.1, No.17, No.24, No.26, No.29, No.40, No.43, No.44, No.45, No.47, No.50, **2021** No.01, No.40, No.43

Lowestoft | Wales & Short Sea Ports | Associated British Ports| Lowestoft | Station Square | Lowestoft | NR32 1BA | +44 (0) 1502 572286