

## NOTICE TO MARINERS

### Lowestoft – Newcome Sands - Geophysical Survey

UTC  BST

Mariners and Port-Users are advised of geophysical survey works that will be carried out by Orsted, on 'Newcome Sands' (SE of the port entrance).

Survey works will be commencing on the 25<sup>th</sup> April 2022 and will be completed within approximately 10 days. The area to be surveyed is shown in the chartlet /table below.

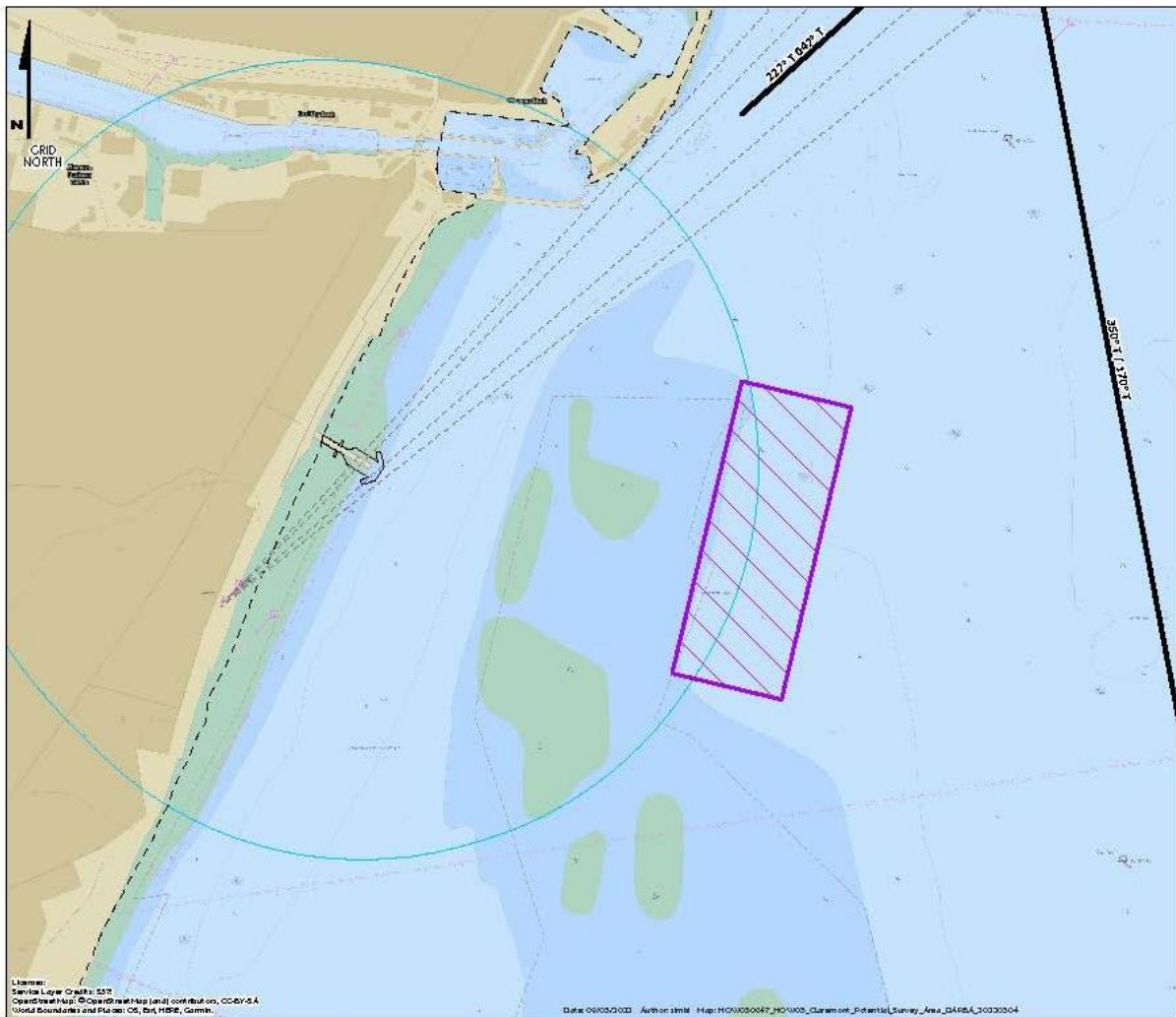


Figure 1- Survey Area

Latitude	Longitude
52° 27.61680' N	1° 45.60328' E
52° 28.03808' N	1° 45.75612' E
52° 28.00306' N	1° 46.01478' E
52° 27.58179' N	1° 45.86190' E

Survey works will be carried out by the vessel 'Spectrum Nyquist'.

Call sign MIIG4. MMSI 232031312. Vessels mobile No. +44 07803 031728.



Figure 2- Spectrum Nyquist

The vessel will have limited manoeuvrability and it is requested that all vessels operating near the survey vessel maintain a safe distance (at least 500m) and pass at minimum speed.

## Divisional Harbour Master East Anglia

**23 April 2022**

### Notice to Mariners Currently in Force:

**2006** No.5 **2007** No.13 **2009** No.19 **2011** No.7, No.10 **2012** No.3, **2013** No.17, No.19, **2015** No.24 **2016** No.12 **2017** No.5, No.22, No.24, No.32 **2019** No.2, No.18 **2020** No.17, No.24, No.26, No.29, No.40, No.43, No.44, No.47, No.50, **2021** No.01, No.40, No.51, No.54, No.57, No.58, **2022** No.1, No.2, No. 10, No. 13, No.18, No. 19

**Lowestoft | Wales & Short Sea Ports | Associated British Ports| Lowestoft | Station Square | Lowestoft | NR32 1BA | +44 (0) 1502 572286**