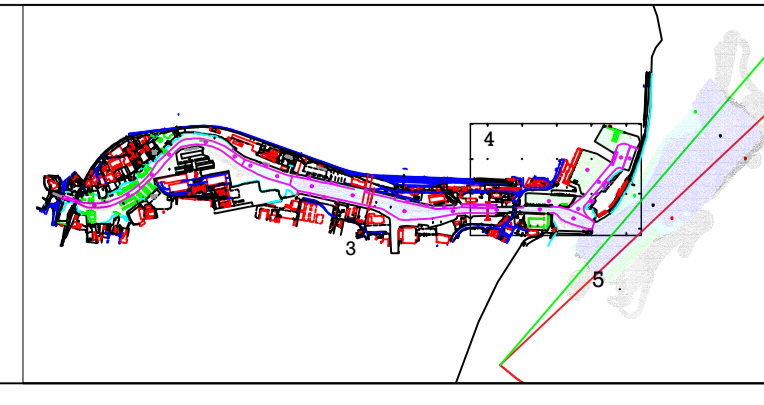


Whilst every care has been taken in the preparation of the information relating to the soundings shown on this chart, ABP make no warranty as to its accuracy and will not accept responsibility, howsoever arising, for any inaccuracies or omissions or for any consequences arising there from.

ABP own copyright and database rights in relation to this publication (including the hydrographic soundings). Reproduction or dissemination of part or all of the contents of this publication in any form is prohibited other than with the express written permission of ABP.

**SCALE 1:1250**  
(When plotted at A1)



**DATUM FOR SOUNDINGS:**  
 Soundings are relative to Admiralty Chart Datum (A.C.D.).  
 A.C.D. is 1.5 metres below O.D. Newlyn.  
 Negative numbers indicate heights above datum.  
 Positive numbers indicate depths below datum.  
 Harbour Dredge level is 3.7 metres below A.C.D.  
 Channel Dredge level is 4.7 metres below A.C.D.  
 Grid co-ordinates are in OSGB36.  
 Geographic co-ordinates are in WGS84.



**North West Ports**  
**Hydrographic Service**  
 Port Office, Ramsden Dock Road, Barrow-in-Furness,  
 Cumbria, LA14 2TW  
 Tel: +44(0)1229 822 911  
 Email: [NWHydro@abports.co.uk](mailto:NWHydro@abports.co.uk)

Lowestoft 4 - Pre-Dredge			
SURVEYED:	JE	25/02/2021	Scale: 1:1250 (Paper Size: A1)
CHARTED:	CH	11/03/2021	Drawing No: 20210225LW4