



**Associated British Ports - Lowestoft**

**No 12a  
2020**

## **NOTICE TO MARINERS**

### **LOWESTOFT - PORT APPROACHES – KIRKLEY SECTOR LIGHT RE-ALIGNMENT**

Mariners and Port Users are advised that following trials in reference to NTM no. 12, Kirkley Sector light, position 52° 27.71'N, 001° 44.54'E, now displays light characteristics which are different to those shown on Chart 1535. These light characteristics will remain until further notice.

The new characteristics for the light are as follows and shown on the below diagram:

Oc G 10s 222°-225° (3°)

Fl G 2.5s 225°-226° (1°)

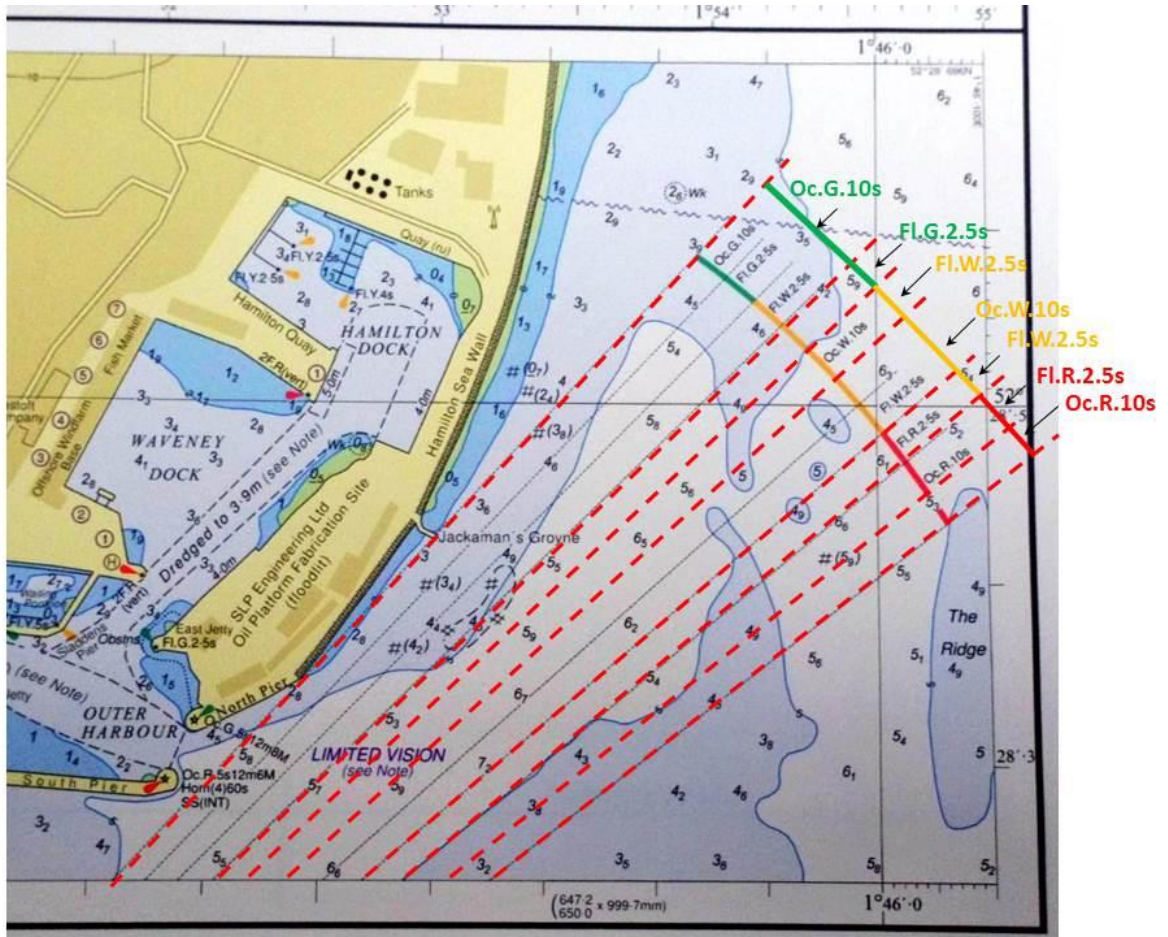
Fl W 2.5s 226°-227° (1°)

Oc W 10s 227°-229° (2°)

Fl W 2.5s 229°-230° (1°)

Fl R 2.5s 230°-231° (1°)

Oc R 10s 231°-232° (1°)



Please contact Lowestoft Port Control, VHF Ch 14, Tel. 01502 572286, if additional information is required.

**Harbour Master**  
**4<sup>th</sup> February 2020**

**Notices to Mariners Currently in Force: 2006 No.5 2007 No.13 2009 No.19 2011 No.7, No.10, No.19 2012 No.3, 2013 No.17, No.19, 2015 No.24 2016 No.12 2017 No.5, No.22, No.24, No.32, No.34 2018 No.34, 2019 No.2, No.18, No.27 2020 No.1, No.5, No.9, No. 10, No.11, No.12a, No. 13.**

(See also [http://www.abports.co.uk/Marine/Short\\_Sea\\_Ports/Lowestoft/Notices\\_to\\_Mariners/](http://www.abports.co.uk/Marine/Short_Sea_Ports/Lowestoft/Notices_to_Mariners/))