



Associated British Ports - Lowestoft

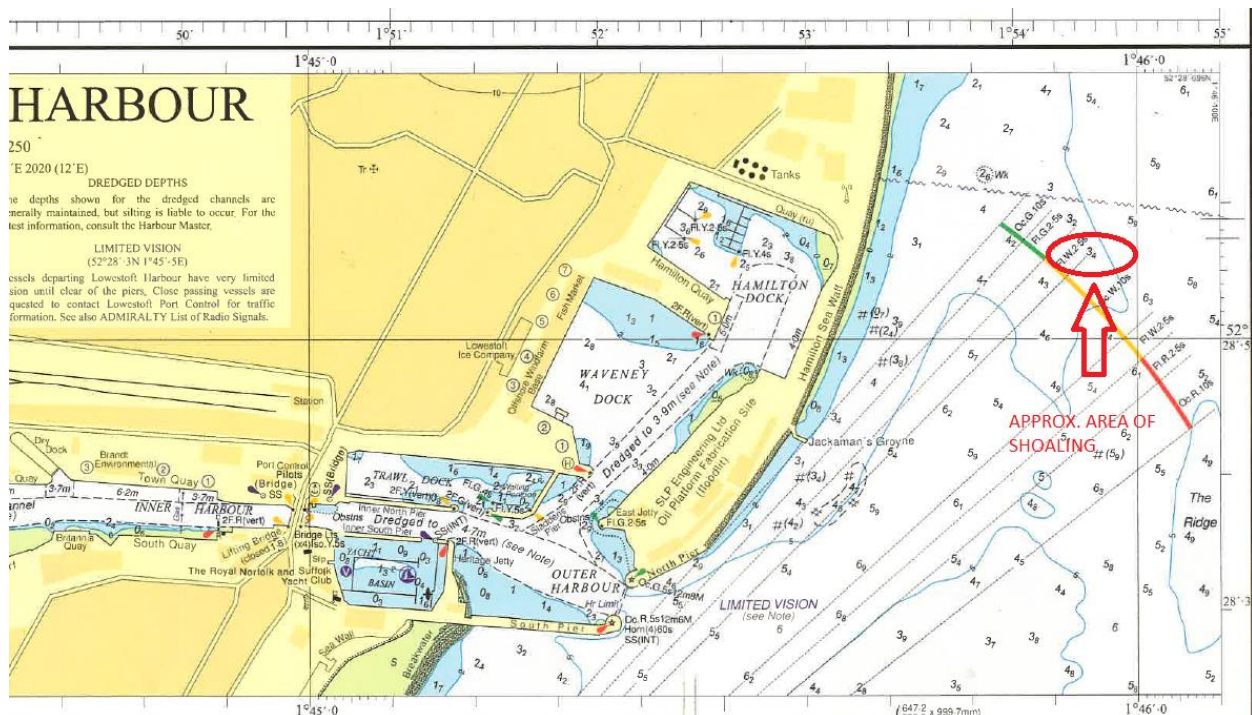
No 43
2020

NOTICE TO MARINERS

LOWESTOFT APPROACHES – SHOALING NORTH EAST OF HARBOUR ENTRANCE

Mariners and Port Users are advised of an area of shoaling approx. 700 metres North East of Lowestoft Harbour entrance, centred on approx. position 52° 28.555'N, 001° 45.936'E.

Depths at 3.3m below Admiralty Chart Datum (ACD), have been identified at the extreme Western edge of the approach channel (just within the white sector of the Port Entry Light (PEL)).



Lowestoft Harbour Chart extract (BA1535)

Mariners and Navigators are requested to navigate with caution when in Lowestoft Harbour approaches, using all means available to check and verify vessel position to ensure that the minimum required under keel clearance is available.

(See also http://www.abports.co.uk/Marine/Short_Sea_Ports/Lowestoft/Notices_to_Mariners/)

The Port Entry Light is an aid to navigation but should not be solely relied upon for an indication of vessel position. The light sectors will be re-aligned so that the shallow area is no longer within the white light sector. A new notice will be issued once this has been completed.

Please contact Lowestoft Port Control, VHF Ch 14, Tel. 01502 572286, if additional information is required.

Harbour Master

19th November 2020.

Notices to Mariners Currently in Force: 2006 No.5 2007 No.13 2009 No.19 2011 No.7, No.10, No.19 2012 No.3, 2013 No.17, No.19, 2015 No.24 2016 No.12 2017 No.5, No.22, No.24, No.32, No.34 2018 No.34, 2019 No.2, No.18, No.27 2020 No.1, No.17, No.24, No.26, No.29, No.39, No.40, No.42, No.43
