

## **NOTICE TO MARINERS**

### **Lowestoft – Outer Harbour - Sladdens Pier - GI Works**

UTC  BST

Mariners and port users are advised that Ground Investigation (GI) works are to be carried out around Sladdens Pier (shown in Figure 1) from Monday 8<sup>th</sup> August 2022.

Works will be carried out using the Jack up barge Haven Seariser 3 assisted by tugs Taska 1 and TM Star for movements. The barge is planned to carry out the works along the entire seaward face of the Pier. Three typical positions are shown in figure 2. The barge will commence works at the north-east end of the pier and work south -west. Some of the positions will obstruct the main navigational channel, but the barge will be able to move to facilitate vessel movements if required. A minimum of 30 minutes notice will be required in such circumstance. When required to be in position at the extreme South West position, work during peak times of CTV movements to and from the Trawl Dock will be avoided where possible.

Port control will be liaising with the barge to facilitate vessel movements.

The GI works are planned to take 2-3 days subject to suitable weather. Works will only take place in daylight, normally 0800-1800. The jack up barge will be berthed at SLP south berth when not operational.

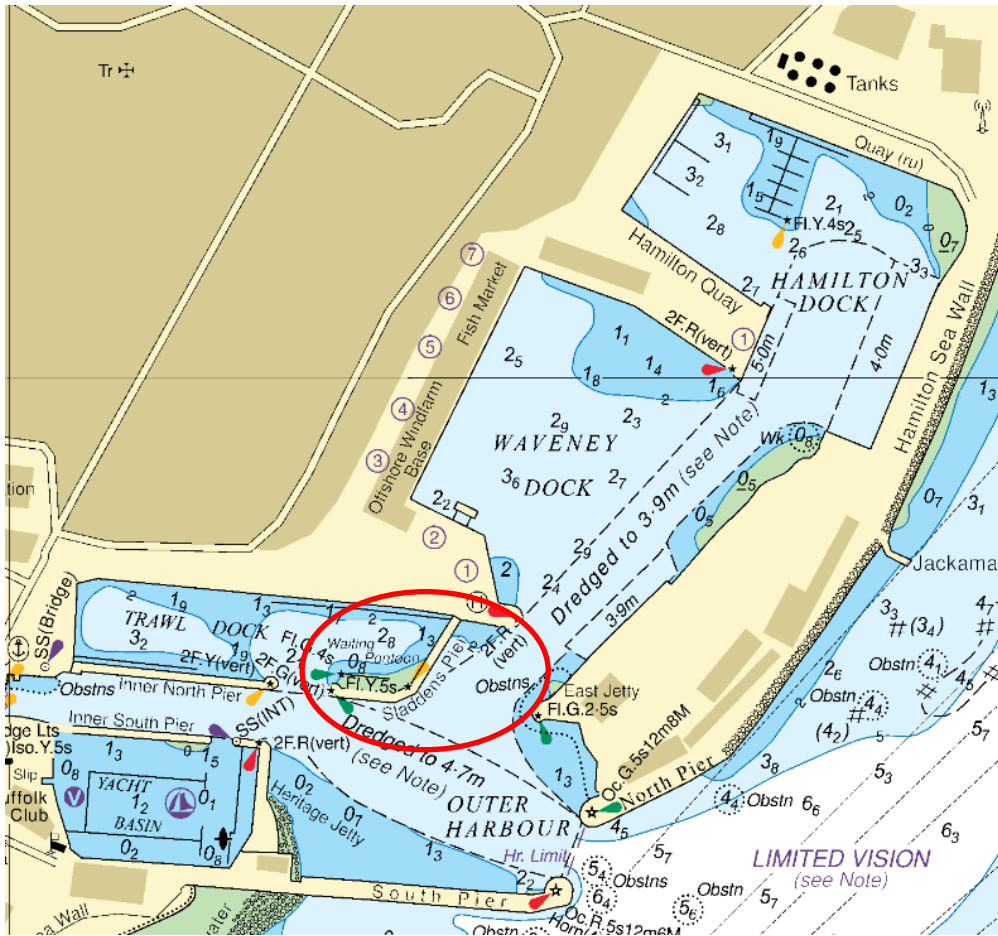


Figure 1 - Location of Sladdens Pier extract from BA1535 – highlighted in red

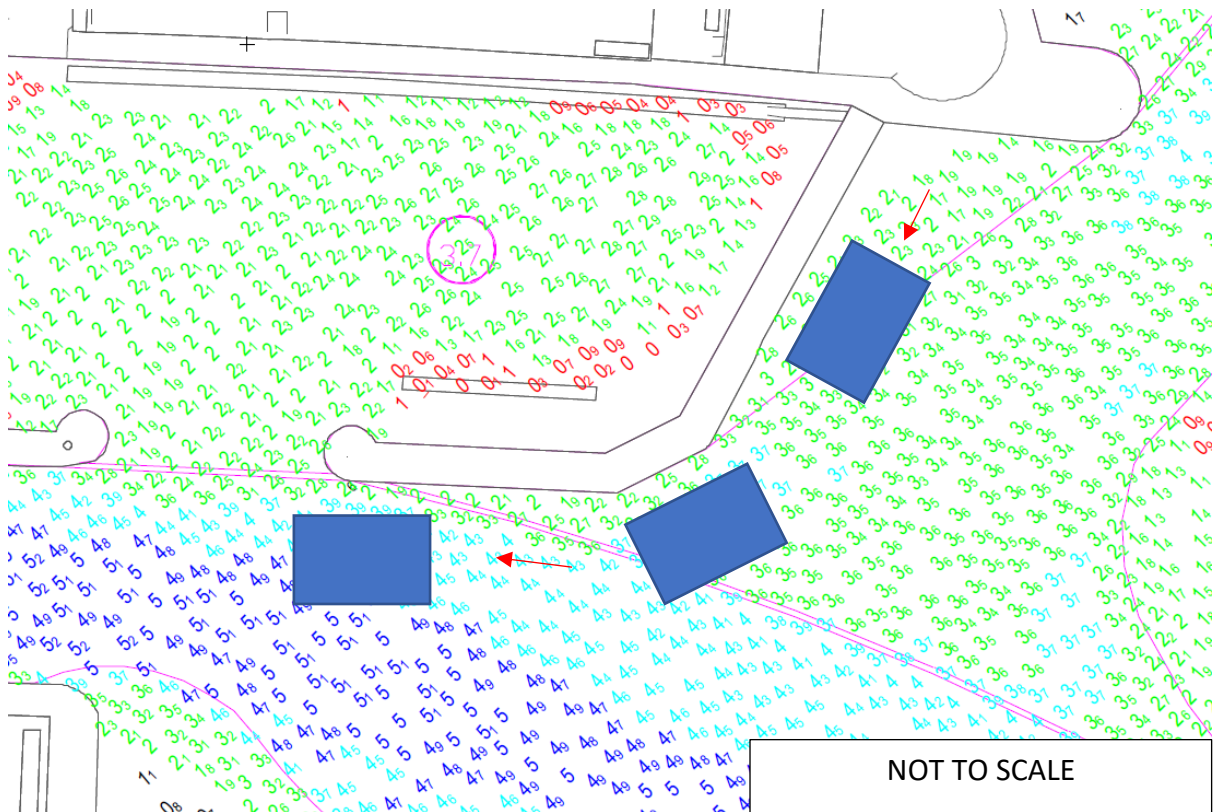


Figure 2 - Jack up worksite positions

Please contact Lowestoft Port Control – VHF Ch14, Tel. 01502 572286 (Option 3), if further information is required.

## **Divisional Harbour Master East Anglia**

**04 August 2022**

**Notice to Mariners Currently in Force:**

**2006** No.5 **2007** No.13 **2009** No.19 **2011** No.7, No.10 **2012** No.3, **2013** No.17, No.19, **2015** No.24 **2016** No.12 **2017** No.5, No.22, No.24, No.32 **2019** No.2, No.18 **2020** No.17, No.24, No.26, No.29, No.40, No.43, No.44, No.47, No.50, **2021** No.01, No.40, No.51, No.54, No.57, No.58, **2022** No.1, No.2, No.23, No.25. No.26, No.32b, No. 35, No. 37, No. 38

**Lowestoft | Wales & Short Sea Ports | Associated British Ports| Lowestoft | Station Square | Lowestoft | NR32 1BA | +44 (0) 1502 572286**