

TO LET

**OPEN STORAGE
OPPORTUNITY**

UP TO 7.88 ACRES

IMMINGHAM
CONTAINER TERMINAL

DFDS NORDIC
TERMINAL

THE SITE

**PAD 4,
PORT OF IMMINGHAM**

/// coast.bowls.partly



24/7 PORT
SECURITY



POTENTIAL TO
SPLIT



AVAILABLE
SUMMER 2025



HEAVY DUTY
SURFACE



RAIL
CONNECTIVITY

M180 / M18 / A1

A160

A1173

PAD 4

RAIL CONNECTIVITY

PORT OF IMMINGHAM

Immingham is the UK's largest port by tonnage, handling around 50 million tonnes of cargo each year. It is the leader in handling a range of cargo including Ro-Ro, dry bulks (grain, animal feed, aggregates), steel, and liquid bulks.

It also has specialised equipment for the handling of biomass, oil and gas terminals and a container terminal connecting the Humber with North Sea short routes and the rest of the world. It is also part of the region's largest automotive distribution centre.



See more information on the Port of Immingham at:
property.abports.co.uk/port/immingham/21165

DESCRIPTION

The site comprises up to 7.88 acres of open storage land split into four pads as follows:

ZONE	AREA (acres)
Pad 4W	2.67
Pad 4E1	1.87
Pad 4E2	2.31
Pad 4E3	1.03

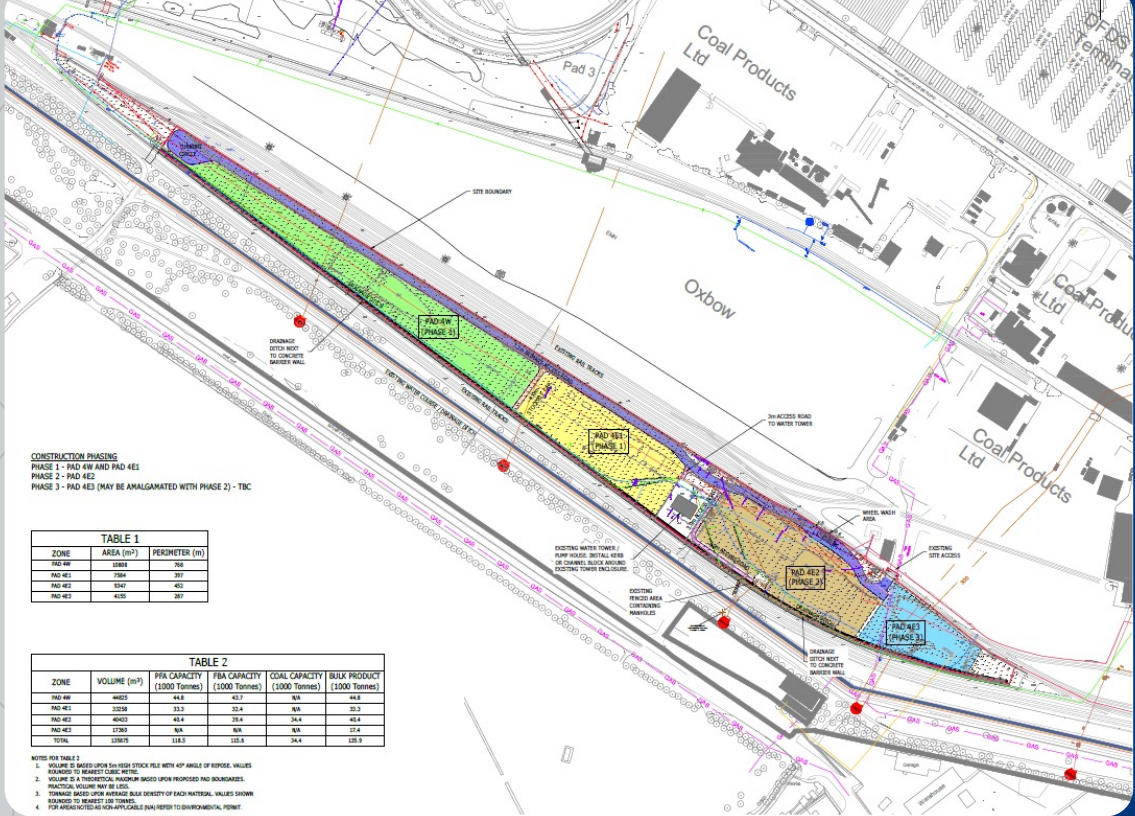


TABLE 1

ZONE	AREA (m ²)	PERIMETER (m)
PAD 4W	10861	760
PAD 4E1	7954	597
PAD 4E2	9347	462
PAD 4E3	4233	287

TABLE 2

ZONE	VOLUME (m ³)	PER CAPACITY T (1000 Tonnes)	RISK CAPACITY T (1000 Tonnes)	COAL CAPACITY (1000 Tonnes)	BULK PRODUCT (1000 Tonnes)
PAD 4W	44033	44.0	43.7	N/A	44.0
PAD 4E1	23058	23.0	22.4	N/A	23.0
PAD 4E2	40033	40.0	39.4	N/A	40.0
PAD 4E3	17263	N/A	N/A	N/A	17.4
TOTAL	124385	124.3	125.5	24.4	126.9

NOTES TO TABLE 2

- VOLUME IS BASED UPON 50% STACK PILE WITH 45° ANGLE OF REPOSE. VALUES VARY BY 1% BASED UPON 5% METRE
- VOLUME IS A THEORETICAL MAXIMUM BASED UPON PROPOSED PAD BOUNDARIES. MAXIMUM VOLUME MAY BE LESS.
- TONNAGE BASED UPON AVERAGE BULK DENSITY OF EACH MATERIAL. VALUES SHOWN BASED UPON MARKET LUMP SAMPLES.
- PUMP AREAS NOTED AS NOT APPLICABLE (N/A) REFER TO ENVIRONMENTAL POINT.



PORT CAPABILITIES

Max Vessel: Length 220 metres
 Beam 26.8 metres
 Draft 10.36 metres

LOCATION

Located at the Port of Immingham within close proximity to the West Gate, benefitting from fantastic access to high speed, congestion free road links to the A180 / M180 through to the M18 and M1 and the M62 via the Humber Bridge.

Humberside International Airport is 7.2 miles drive from the port and has a helicopter base to service the offshore industries.



SEA

Zeebrugge	- 200 Nautical Miles
Rotterdam	- 203 Nautical Miles
Antwerp	- 204 Nautical Miles
Hamburg	- 377 Nautical Miles
Gothenburg	- 495 Nautical Miles
Helsinki	- 1506 Nautical Miles



ROAD

A160/A180	- 4 km / 2.5 miles
M180 (J5)	- 20.4 km / 12.7 miles
M62 (J38)	- 53 km / 33 miles
M18 (J5)	- 61 km / 38 miles

TERMS

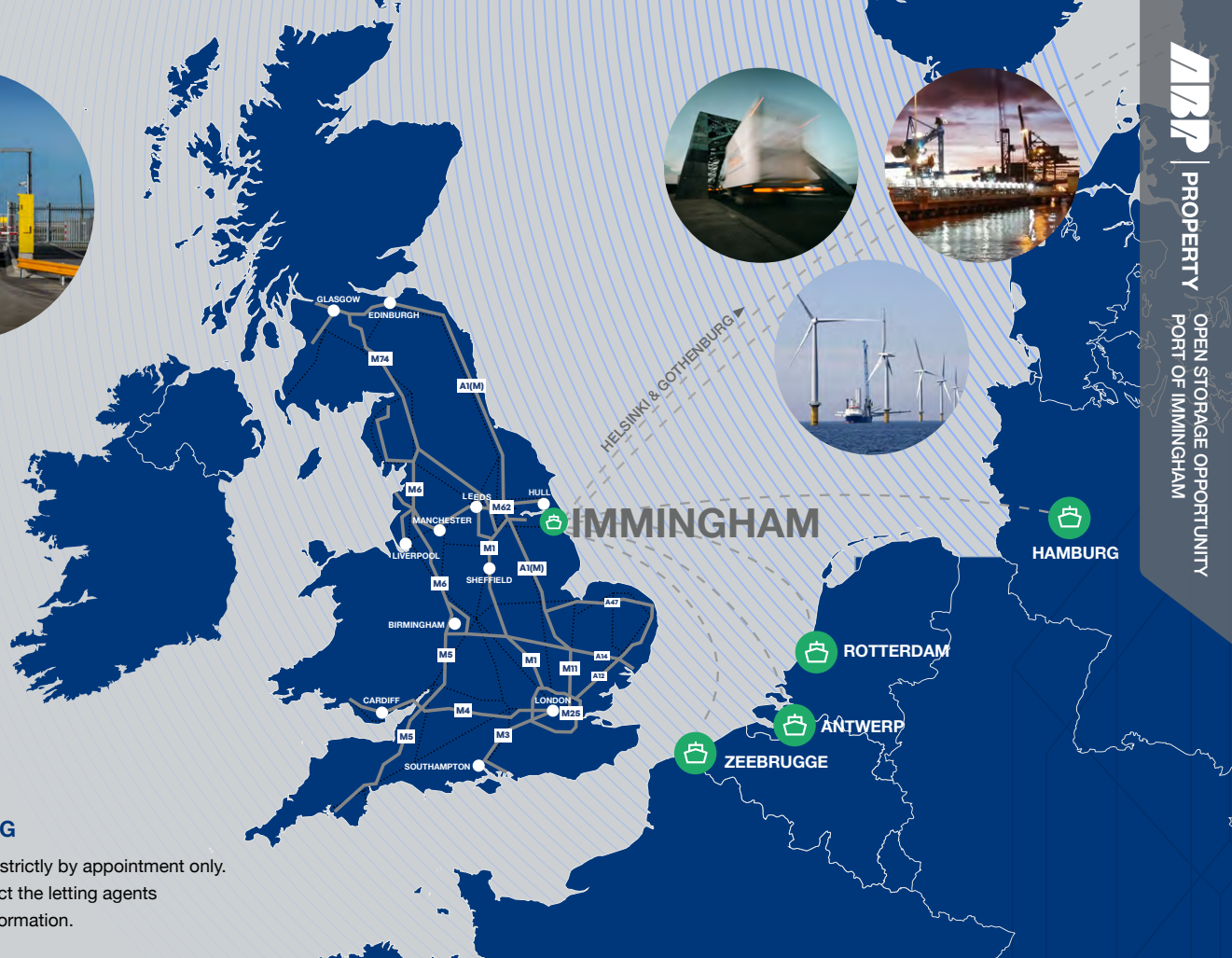
Pad 4 is available by way of a new Full Repairing and Insuring lease with terms to be agreed. Further information is available on request.

USE

Ideal for construction bulks. Area can be split to suit requirement. Ad-hoc or regular cargoes welcome.

VIEWING

Viewings are strictly by appointment only. Please contact the letting agents for further information.



IMPORTANT NOTICE RELATING TO THE MISREPRESENTATION ACT 1967 AND THE PROPERTY MISDESCRIPTION ACT 1991 (REPEAL) ORDER 2013
 JLL and PPH Commercial on their behalf and for the sellers or lessors of this property whose agents they are, give notice that: (i) The Particulars are set out as a general outline only for the guidance of intending purchasers or lessees, and do not constitute, nor constitute part of, an offer or contract; (ii) All descriptions, dimensions, references to use and occupation, and other details are given in good faith and are believed to be correct, but any intending purchasers or tenants should not rely on them as statements or representations of fact, but must satisfy themselves by inspection or otherwise as to the correctness of each of them; (iii) No person employed by JLL and PPH Commercial has any authority to make or give any representation or warranty in relation to this property. Unless otherwise stated prices and rents quoted are exclusive of VAT. The date of this publication is February 2025.



Harry Fullerton
 M. 07555 444 385
 harry.fullerton@jll.com

Benjamin Fairhurst
 M. 07936 333 696
 benjamin.fairhurst@jll.com



Duncan Willey
 M. 07710 344 602
 duncan.willey@pph-commercial.co.uk



humberproperty@abports.co.uk
 humber.commercial@abports.co.uk