

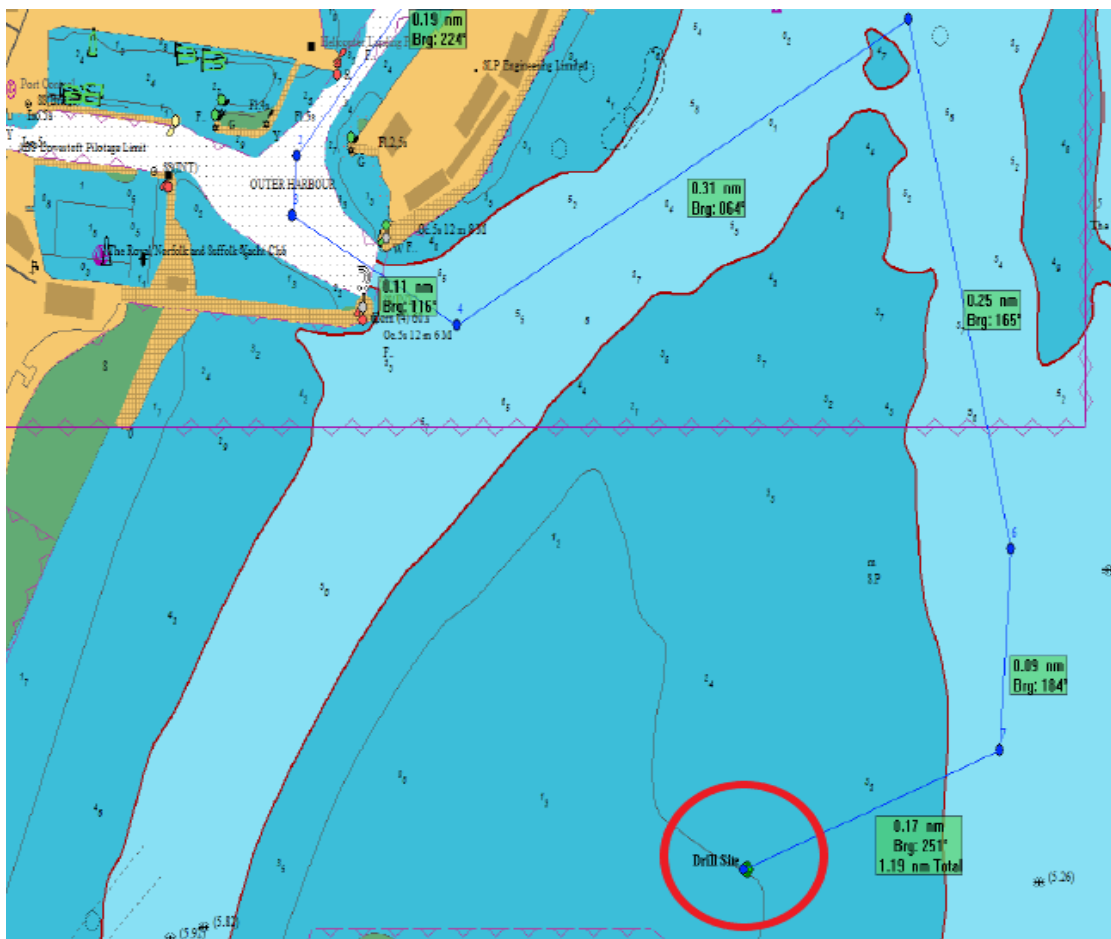
## NOTICE TO MARINERS

### Lowestoft Approaches – Ground Investigations by Jack Up Barge Aran 250 on Lowestoft Bank

UTC ☐ BST ☒

Mariners, Port Users and Vessel Operators/Agents are advised of the following activities planned for Lowestoft Approaches:

On 26/05/22 Jack up Barge Aran 250 will proceed from Lowestoft to a position on Lowestoft Bank – approx. position 52° 28 02.3'N, 01° 45.4'E (works area as indicated by the red circle on below chartlet).



Survey Area

The Aran 250 will remain jacked up in this position for approx. one week while undertaking seabed GI sampling activities.

The barge will have deck lighting to indicate its position during the hours of darkness. Barge survey activities will be supported by tug 'Will Challenge', and a support craft 'CRC Vanguard'.



Aran 250

Mariners are requested to navigate with caution in this area, and to afford the Aran 250 as wide a berth as is safe and practical to do so.

Please contact Lowestoft Port Control, VHF Ch14, Tel. 01502 572286 (Option 3), if further information is required.

### Divisional Harbour Master East Anglia

**25 May 2022**

#### **Notice to Mariners Currently in Force:**

**2006** No.5 **2007** No.13 **2009** No.19 **2011** No.7, No.10 **2012** No.3, **2013** No.17, No.19, **2015** No.24 **2016** No.12 **2017** No.5, No.22, No.24, No.32 **2019** No.18 **2020** No.17, No.24, No.26, No.29, No.40, No.43, No.44, No.47, No.50, **2021** No.01, No.40, No.51, No.54, No.57, No.58, **2022** No.1, No.2, No.18a, No.22, No. 23, No.24, No.25, No.26, No.27

**Lowestoft | Wales & Short Sea Ports | Associated British Ports| Lowestoft | Station Square | Lowestoft | NR32 1BA | +44 (0) 1502 572286**