

NOTICE TO MARINERS

Lowestoft – Diving Activities Lowestoft outer Harbour and NE Approaches

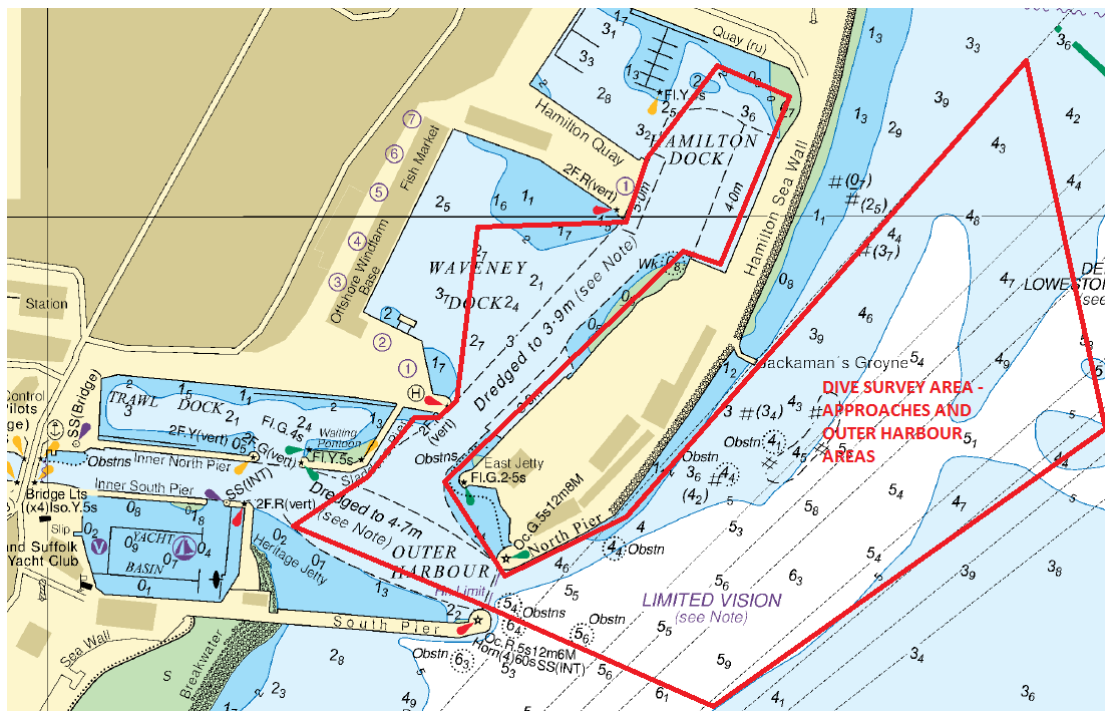
UTC BST

Mariners and Port-Users are advised of Dive Survey activity scheduled to take place in Lowestoft Outer Harbour Area and Approaches as follows:-

Location – Selected target areas - East end of Hamilton Dock, Waveney Dock, Turning Basin and North East Approaches to Lowestoft.

Timings – Daylight hours commencing 12th February, duration 2 to 3 weeks.

Craft/Vessels involved – Diving from Quay areas Adjacent to dive targets, and from work vessel/multi cat 'Hound Dog', supported by a small safety boat – Call sign 'Clyde Divers'.



Diving Activity locations will be signified by flag 'Alpha'. Vessel movements will be coordinated by Lowestoft Port Control. All vessels are requested to provide the Dive activity a wide berth and pass at slow speed to minimise vessel wash.

Please contact Lowestoft Port Control, VHF Ch14, Tel. 01502 572286 (Option 3) if further information is required.

Divisional Harbour Master East Anglia

12 February 2024

Notice to Mariners Currently in Force:

2006 No.5 **2007** No.13 **2009** No.19 **2011** No.7, No.10 **2012** No.3, **2013** No.17, No.19, **2015** No.24
2016 No.12 **2017** No.5, No.22, No.24, No.32 **2019** No.18 **2020** No.17, No.24, No.26, No.29, No.47,
No.50, **2021** No.40, No.51, No.54, **2022** No.2, No.25, No.26, **2023** No.1, No.50, No.55 **2024** No.1,
No.2, No.3

**Lowestoft | Wales & Short Sea Ports | Associated British Ports | Lowestoft | Station Square |
Lowestoft | NR32 1BA | +44 (0) 1502 572286**