

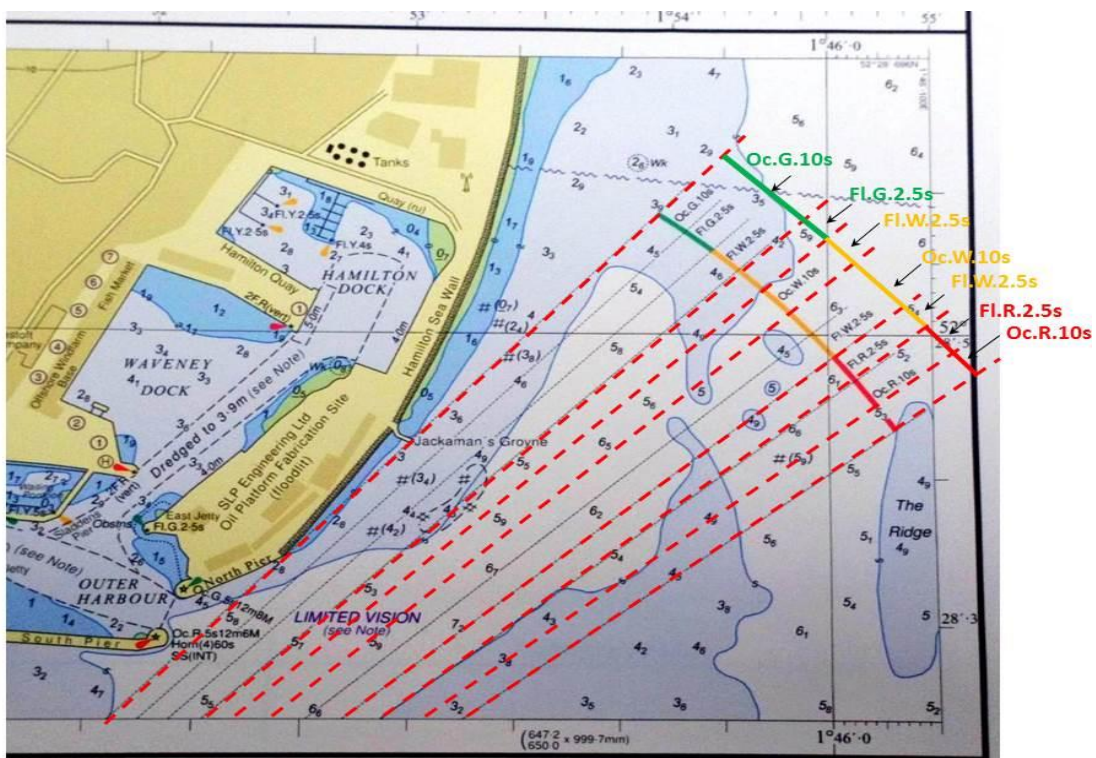


NOTICE TO MARINERS

LOWESTOFT - PORT APPROACHES – KIRKLEY SECTOR LIGHT RE-ALIGNMENT

Mariners and Port Users are advised that on 24th November, Kirkley Sector light, position 52° 27.71'N, 001° 44.54'E, will have the light characteristics changed, with amended sectors as detailed below and shown in the following diagram:-

- Oc G 10s 222°-225° (3°)
- FI G 2.5s 225°-226° (1°)
- FI W 2.5s 226°-227° (1°)
- Oc W 10s 227°-229° (2°)
- FI W 2.5s 229°-230° (1°)
- FI R 2.5s 230°-231° (1°)
- Oc R 10s 231°-232° (1°)



(See also http://www.abports.co.uk/Marine/Short_Sea_Ports/Lowestoft/Notices_to_Mariners/)

The light re-alignment is to mark the area of shoaling as detailed in NTM No.43.

To facilitate these changes the light is likely to be extinguished between approx. 09:00hrs and 12:00hrs 24th November. Mariners and port users are requested to navigate with caution in Lowestoft approaches during the period of light change.

Please contact Lowestoft Port Control, VHF Ch 14, Tel. 01502 572286, if additional information is required.

Divisional Harbour Master East Anglia

23rd November 2020.

Notices to Mariners Currently in Force: 2006 No.5 2007 No.13 2009 No.19 2011 No.7, No.10, No.19 2012 No.3, 2013 No.17, No.19, 2015 No.24 2016 No.12 2017 No.5, No.22, No.24, No.32, No.34 2018 No.34, 2019 No.2, No.18, No.27 2020 No.1, No.17, No.24, No.26, No.29, No.40, No.42, No.43, No.44
