

**MMS**  
SHIP REPAIR • OFFSHORE • WORKBOATS

# Off-Roader

Available for Charter



## A low emission way to ship freight in Yorkshire

The **MMS Off-Roader** is available to carry a multitude of products between all of the Humber Ports and inland waterways to Leeds, Rotherham and upper River Trent and Ouse wharfs.

The barge has undergone a major conversion and upgrading programme at the company's own shipyard MMS in Hull.

Able to carry a multitude of cargoes of up to 500 tonnes (DWT) ranging from:

- **Bulk - aggregates, grains, steel, wood pellets**
- **Break bulk - building materials, pallets, boxes, drums, bags**
- **Containers - 10ft, 20ft, 40ft**
- **Special cargoes - heavy lift & large loads unable to move via road**
- **Recycled materials – refuse derived & solid recoverable fuels**
- **Potable fresh water**



Call: 01482 221209



# MMS Off-Roader

A low emission way to ship freight in Yorkshire

## MMS Off-Roader

A low emission way to ship freight in Yorkshire



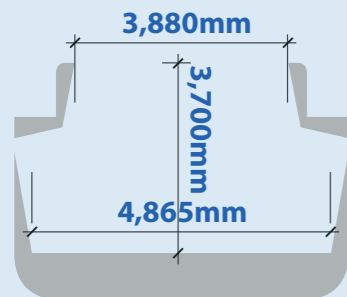
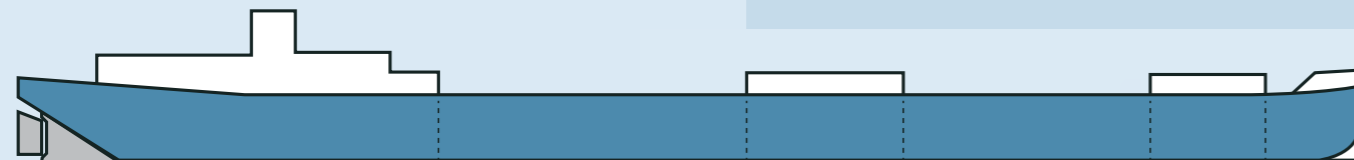
Comfortable crew accommodation

1x MMS Off-Roader =



### Dimensions & Performance

- Length Overall: 59.95m
- Length between perpendiculars: 58.70m
- Breadth (moulded): 6.00m
- Depth (moulded): 2.95m
- Load Draught (moulded): 2.458m
- Assigned Summer Freeboard: 0.5m
- Speed: 8kt



**CH2**  
13,510mm x 3,880mm

**CH1**  
11,030mm x 3,880mm

**Each barge load can take up to 25 lorries off public roads.**

Therefore 2 return trips per week between the Humber Ports and Leeds could potentially remove 5,200 lorry loads per year. This will massively reduce carbon emissions and improve road safety. Using the MMS Off-Roader improves the environment and people's sense of well-being.

The barge is owned and operated by MMS Workboats who have been serving the marine industry in the Humber Region for 35 years.

MMS have been involved with several inland waterways projects during the last 25 years, none having developed until now. The MMS Off-Roader was originally built as a petroleum barge by Yorkshire Dry Dock.

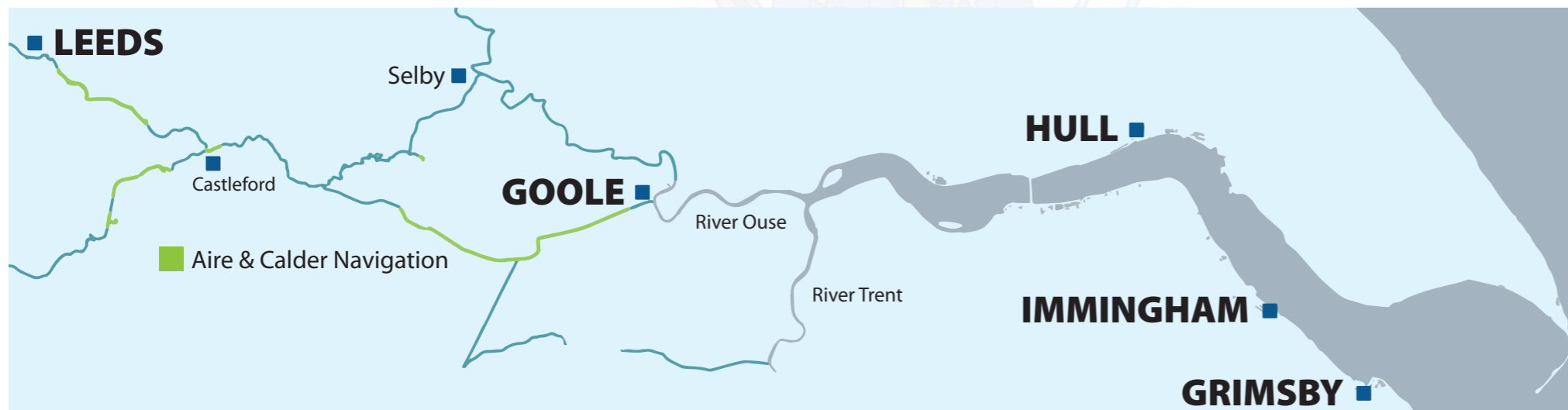
MMS purchased the vessel in December 2021 and engaged naval architects to recalculate and redesign the barge, enabling it to carry bulk cargoes. The vessel was then converted

and fully upgraded over a 12 month period, making the MMS Off-Roader into a modern, fully-equipped vessel.

Based in Hull, MMS Ship Repair & Dry Dock Co Ltd is a well-established shipyard which has carried out over 1,200 dry dockings, over 10,000 separate repair and conversion contracts and built over 20 different types of work boats. [www.mms-shiprepair.co.uk](http://www.mms-shiprepair.co.uk)

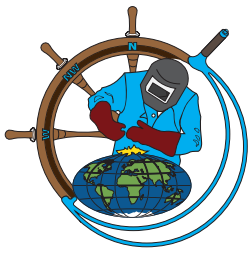
MMS Offshore Renewable Services Ltd owns and operates vessels supporting offshore wind farm development. The company's vessels carry out a multitude of roles during both construction and O&M stages, including transporting technicians, delivering all types of cargoes, undertaking various surveys, refuelling and carrying out oil change duties. [www.mms-offshore.co.uk](http://www.mms-offshore.co.uk)

Our company strategy is to offer our clients a professional and hassle-free service engaging well maintained vessels, tools and equipment operated by a well-trained local workforce.



Modern well-equipped wheelhouse





**MMS**  
SHIP REPAIR • OFFSHORE • WORKBOATS

# Off-Roader

Available for Charter



## Freight by water



MMS are members of:  
**Commercial Boat Operators Association (CBOA)**  
**The Workboat Association**  
**Humber Marine and Renewables**  
**NOF**

For further information please contact  
**Rob Langton**, Managing Director  
**Nick Brambles**, Marine Manager  
**Maik Brown**, Inland Waterways Development

**MMS Workboats**  
Alexandra Dock, Hull, HU9 1TA, United Kingdom  
T: +44 (0) 1482 221209  
E: [info@mms-workboats.co.uk](mailto:info@mms-workboats.co.uk)