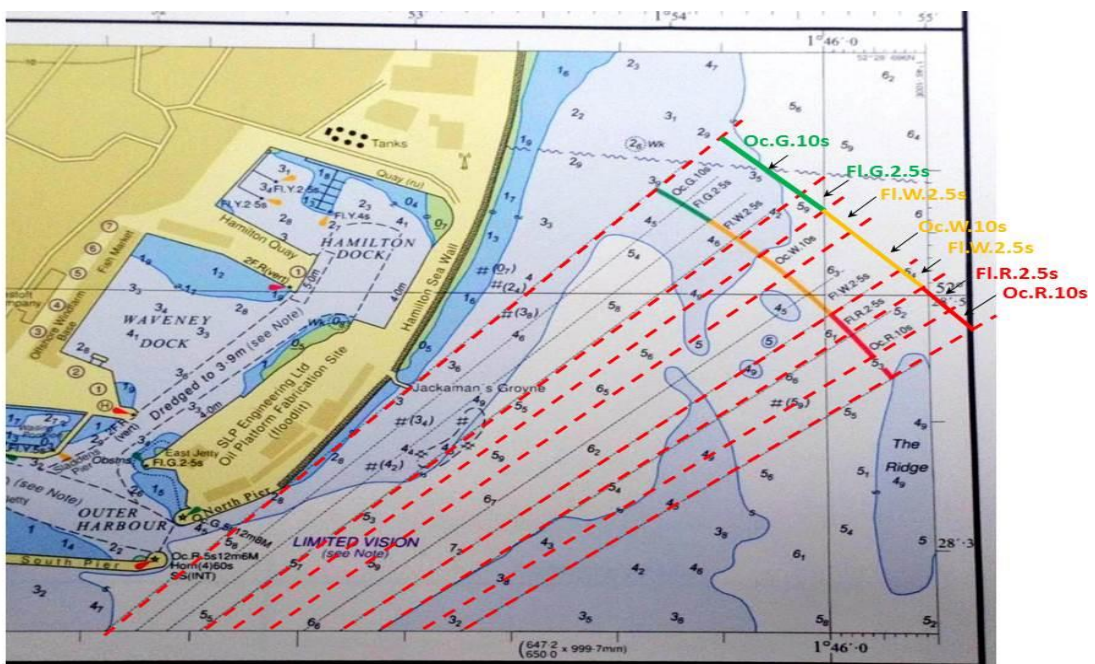


NOTICE TO MARINERS

Lowestoft Approaches – Port Entry/Kirkley Sector Light Re-instated

UTC ☐ BST ☒

Mariners and Port Users are advised that the Lowestoft (Kirkley), Sector Port Entry Light (PEL), positioned 52° 27.71'N, 01° 44.54'E, has been re-instated – light characteristics are as advised in NTM 12b, and as detailed on chart BA1535.



Mariners are requested to report any issues with the reliability of this light moving forward.

Please contact Lowestoft Port Control, VHF Ch14, Tel. 01502 572286 (Option 3) if further information is required.

Divisional Harbour Master East Anglia

23 April 2025

Notice to Mariners Currently in Force:

2006 No.5 **2007** No.13 **2009** No.19 **2011** No.7, No.10 **2012** No.3, **2013** No.17, No.19, **2015** No.24 **2016** No.12 **2017** No.22, No.24, No.32 **2019** No.18 **2020** No.26, No.29, No.47, No.50, **2021** No.51, **2022** No.25 **2024** No.42, No.52, No.53a, No.54 **2025** No.01, No.04, No.09, No.10, No.11, No.13a

Lowestoft | Wales & Short Sea Ports | Associated British Ports| Lowestoft | Station Square | Lowestoft | NR32 1BA | +44 (0) 1502 572286