

NOTICE TO MARINERS

Lowestoft Inner Harbour – Gull Wing - Marine Construction Activities North and South Sides of Lake Lothing

UTC BST

Mariners and Port Users are advised of continued construction activity in Lake Lothing in the vicinity of the Gull Wing Bridge crossing.

From 25th August, barges will be working North and South sides installing dolphin fender piles and pier cofferdam piles.

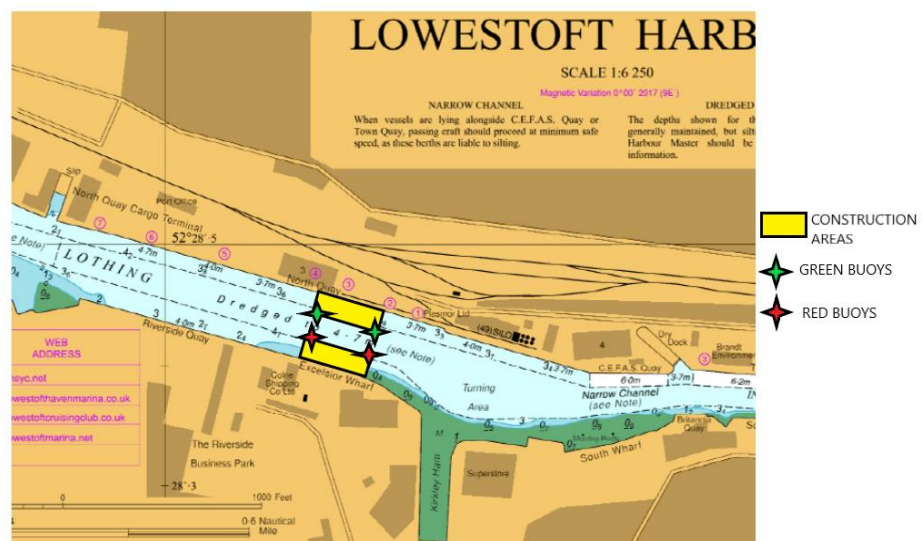
Piling activities will be focussed in the areas shaded yellow on the below chart extract. Port and stbd hand lighted buoys have been placed in positions also indicated on the chart extract. Actual buoy positions are as follows:-

Fl.G 2.5s NW Position = 52°28'26.73"N 001°44'10.86"E

Fl.R 2.5s SW Position = 52°28'25.70"N 001°44'10.37"E

Fl.G 2.5s NE Position = 52°28'25.58"N 001°44'17.35"E

Fl.R 2.5s SE Position = 52°28'24.55"N 001°44'16.86"E



Construction Work Areas and approximate buoy locations

With the buoys in these positions a channel width of 32m is maintained. There may be occasions during barge repositioning, when the barges or other marine plant encroach into this channel width. These encroachments are only anticipated to be by up to approx. 5m, and scheduled so that they do not coincide with any large commercial vessel movements.

The piles once fully installed are only at approximately 0.2m height above the MHWS mark. There will be times when the barges are either working only North or South sides of the Lake. **It is therefore essential that Mariners only pass between the red and green buoys to keep clear of the piles and any other marine obstructions in the shaded yellow areas.** As an additional precaution (to try to highlight the presence of the piles) there will be a small lit special mark buoy placed in the centre pile and the pile closest to the edge of the navigational channel on that side, as per photograph below. Buoy flash sequence is QFI.Y



Small special mark buoys within piles

Vessels involved with construction will be monitoring VHF Ch 14. Barges will be illuminated during the hours of darkness.

All vessels are requested to navigate with extreme caution when transiting this area, and to pass the construction site at slow speed to reduce the effects of vessel wash.

This notice supersedes notice No.34 – 2021 which is hereby cancelled.

Please contact Lowestoft Port Control – VHF Ch14, Tel. 01502 572286, if further information is required.

Divisional Harbour Master East Anglia

24 August 2021

Notice to Mariners Currently in Force:

2006 No.5 **2007** No.13 **2009** No.19 **2011** No.7, No.10, No.19 **2012** No.3, **2013** No.17, No.19, **2015** No.24 **2016** No.12 **2017** No.5, No.22, No.24, No.32, No.34 **2018** No.34, **2019** No.2, No.18 **2020** No.1, No.17, No.24, No.26, No.29, No.40, No.43, No.44, No.45, No.47, No.50, **2021** No.01, No.28, No.38, No.39

**Lowestoft | Wales & Short Sea Ports | Associated British Ports| Lowestoft | Station Square |
Lowestoft | NR32 1BA | +44 (0) 1502 572286**