



Associated British Ports - Lowestoft


**No 24
2019**

NOTICE TO MARINERS

LOWESTOFT – SOUTHERN HOLM SANDS – CURRENT METER DEPLOYMENT

Mariners and Port Users are advised that a seabed mounted acoustic monitoring device will be deployed by using the vessel 'Wessex Explorer' (see photo 1). This device will be deployed on or soon after 21st August 2019. The device will remain in position for a period of approx. 35 days. Notification will be provided once the equipment has been recovered and removed from the area.

The device will be deployed in the following approx. position at a depth of 8.6m:

52°27.402 N 01°47.600 E (Shown on chart extract by )

NOTE THAT THERE WILL BE NO WATER SURFACE BUOY OR MARKER. MARINERS ARE REQUESTED TO CONSIDER THE EQUIPMENT POSITION WHEN NAVIGATING OR WORKING IN THIS AREA



Photo 1 : Wessex Explorer

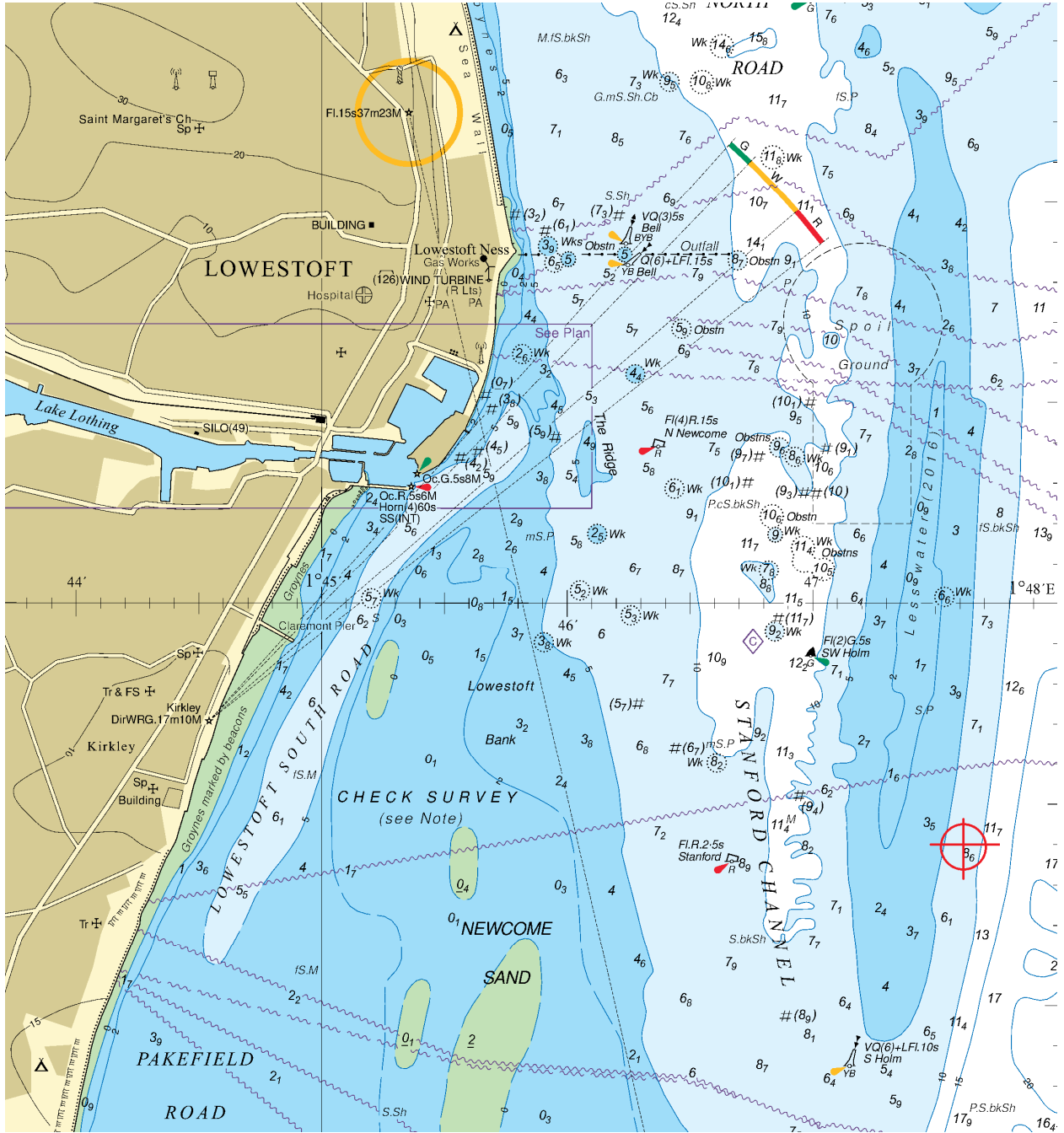
Please contact Lowestoft Port Control, VHF Ch 14, Tel. 01502 572286, if additional information is required.

Harbour Master

20th August 2019

Notices to Mariners Currently in Force: 2006 No.5 2007 No.13 2009 No.19 2011 No.7, No.10, No.19 2012 No.3, 2013 No.17, No.19, 2015 No.10, No.24 2016 No.12, 2017 No.5, No.9a, No.12, No.22, No.24, No.32, No.34, No.35, 2018 No.1, No.34, No.35, No.36, No.38, 2019 No.1, No.2, No.18, No. 23, No. 24

(See also http://www.abports.co.uk/Marine/Short_Sea_Ports/Lowestoft/Notices_to_Mariners/)



(See also http://www.abports.co.uk/Marine/Short_Sea_Ports/Lowestoft/Notices_to_Mariners/)