

NOTICE TO MARINERS

Lowestoft – Gull Wing Construction Site – Updated Details

UTC BST

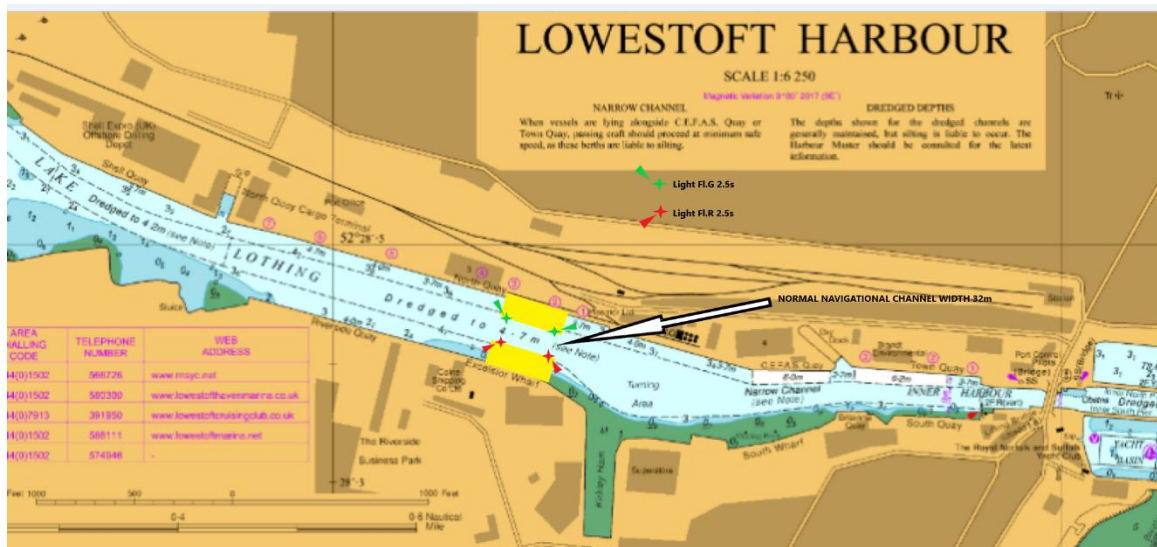
Type Main text of notice

Mariners and Port Users are advised of continued construction activity in Lake Lothing in the vicinity of the Gull Wing Bridge crossing.

Piling activities from barges continue North and South sides.

Construction will be focussed in the areas shaded yellow on the below chart extract. Navigation Channel Lights through the construction area consist of port and stbd lateral marks fixed to the cofferdam piles. Positions of the lights are as follows:-

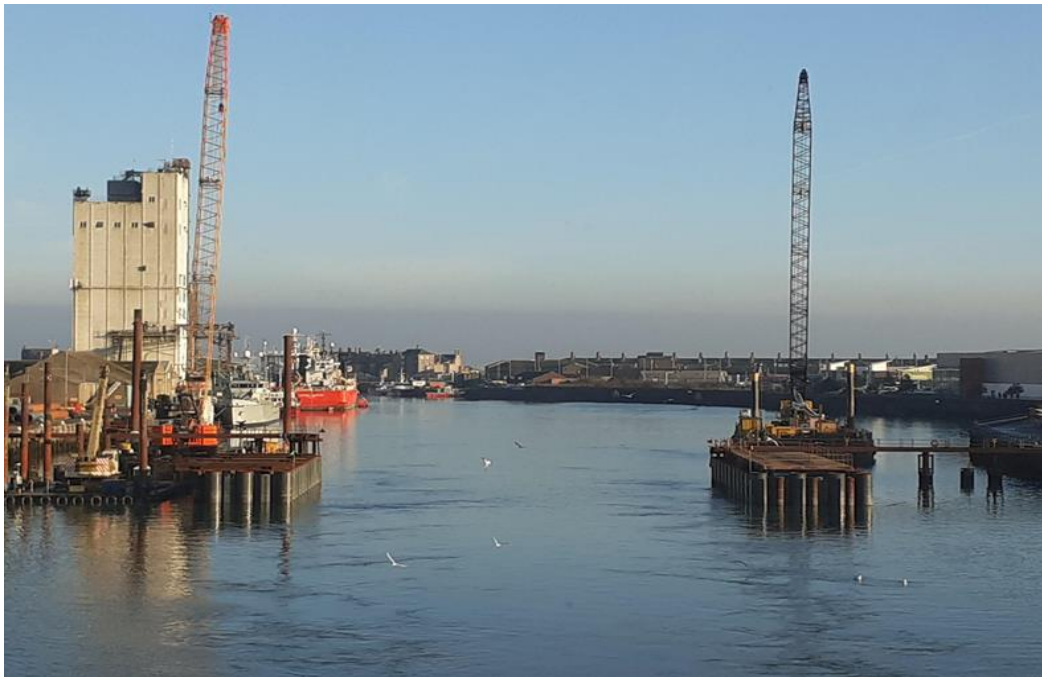
- Fl.G 2.5s NW Beacon Position = 52° 28' 26.30"N, 001° 44' 13.38"E
- Fl.R 2.5s SW Beacon Position = 52° 28' 25.25"N, 001° 44' 12.88"E
- Fl.G 2.5s NE Beacon Position = 52° 28' 26.04"N, 001° 44' 15.03"E
- Fl.R 2.5s SE Beacon Position = 52° 28' 24.93"N, 001° 44' 14.49"E



Construction Work Areas and approximate light locations



Gull Wing Construction Area from the East



Gull Wing Construction Area from the West

The navigation channel in this area is 32m wide. There may be occasions during barge repositioning, when the barges or other marine plant encroach into this channel area. These encroachments are only anticipated to be up to approx. 5m and are scheduled so that they do not coincide with any large commercial vessel movements. Vessels involved with construction will be monitoring VHF Ch 14. Barges will be illuminated during the hours of darkness.

Please check with Lowestoft Port Control for details of any variances to channel availability.

All vessels are requested to navigate with extreme caution when transiting this area, and to pass the construction site at slow speed to reduce the effects of vessel wash.

Barges may be moored for prolonged durations East or West of the cofferdams but outside of the navigational channel. These barges have white flashing lights to mark their positions during hours of darkness.

The Eastern Dolphin piles currently have extensions to support steel access platforms. The central piles and platform sections are marked by yellow and white flashing lights.

It is essential that Mariners only pass between the red and green beacons. Navigation through the site outside of the marked channel (within the yellow shaded areas), is strictly prohibited.

This notice supersedes notice No.43 – 2021 which is hereby cancelled.

Please contact Lowestoft Port Control, VHF 14, 01502 572286 (option 3), if further information is required.

Divisional Harbour Master East Anglia

15 January 2022

Notice to Mariners Currently in Force:

2006 No.5 **2007** No.13 **2009** No.19 **2011** No.7, No.10 **2012** No.3, **2013** No.17, No.19, **2015** No.24 **2016** No.12 **2017** No.5, No.22, No.24, No.32 **2019** No.2, No.18 **2020** No.17, No.24, No.26, No.29, No.40, No.43, No.44, No.47, No.50, **2021** No.01, No.40, No.51, No.54, No.57, No.58, **2022** No.1, No.2

Lowestoft | Wales & Short Sea Ports | Associated British Ports | Lowestoft | Station Square | Lowestoft | NR32 1BA | +44 (0) 1502 572286