

Southampton  
Teignmouth  
Plymouth  
Newport  
Cardiff  
Swansea  
Barrow  
Ayr  
Troon  
Hull  
Lowestoft  
Ipswich



**We are proud to lead the way in delivering an outstanding experience for our cruise partners and their customers. With Europe's leading cruise turnaround port and a range of strategically located ports around Britain, our experience is second to none.**

We recognise how important it is to cruise operators that service and logistics go **beyond the port** itself. That's why we deliver an end-to-end service; we want our cruise partners to have a great experience through our ports, and our partnership doesn't stop when they leave port.

We remain at the forefront of cruise by continuously investing in our people, partnerships and sustainable infrastructure.

We model industry-leading port services and forward planning across all our 12 cruise port locations.

For us, tomorrow has already begun.

*Rebekah Keeler*  
ABP Head of Cruise



MSC MAGNIFICA

# ABP cruise locations



MSC Virtuosa at Southampton's City Cruise Terminal

**Across its network of 12 cruise ports, Associated British Ports (ABP) delivers for its cruise partners exciting destinations, excellent connectivity and a wealth of experience.**

The ABP Cruise ports of Southampton, Teignmouth, Plymouth, Newport, Cardiff, Swansea, Barrow, Ayr, Troon, Hull, Lowestoft and Ipswich offer multiple access points to the best of the British Isles and superb options for regional UK departures.

Southampton has a long-established global cruise reputation. In the last few years, ABP has invested £80m in its cruise infrastructure, with sustainability playing a key role. This commitment to the future of cruise, combined with the port's unrivalled sea, land and air access, cements its reputation as Europe's leading cruise turnaround port.

The industry-leading level of expertise found within ABP cruise caters for smaller expedition and luxury ships and the world's largest cruise ships. ABP Cruise delivers enhanced access to the UK and overseas markets.

# Southampton

## No.1

Europe's leading cruise  
turnaround port



**Winner of multiple awards for its port facilities and cruise infrastructure, the Port of Southampton remains the UK's premier cruise port and the UK and Northern Europe's number one departure port.**

The port's five cruise terminals welcome more than 500 cruise ship calls annually from customers including Aida, Azamara, Celebrity Cruises, Cunard, Disney Cruise Line, Fred. Olsen Cruise Lines, MSC Cruises, Norwegian Cruise Line, P&O Cruises, Oceania Cruises, Princess Cruises, Regent Seven Seas, Royal Caribbean and Saga Cruises. To cater for the growing demand of the cruise passenger trade, ABP continues to invest, together with its customers, in shoreside and marine facilities, as well as developing partnerships beyond the port.

The port is taking significant steps to ensure sustainability is core to the future of cruise, having invested in the UK's first commercial Shore Power facility.

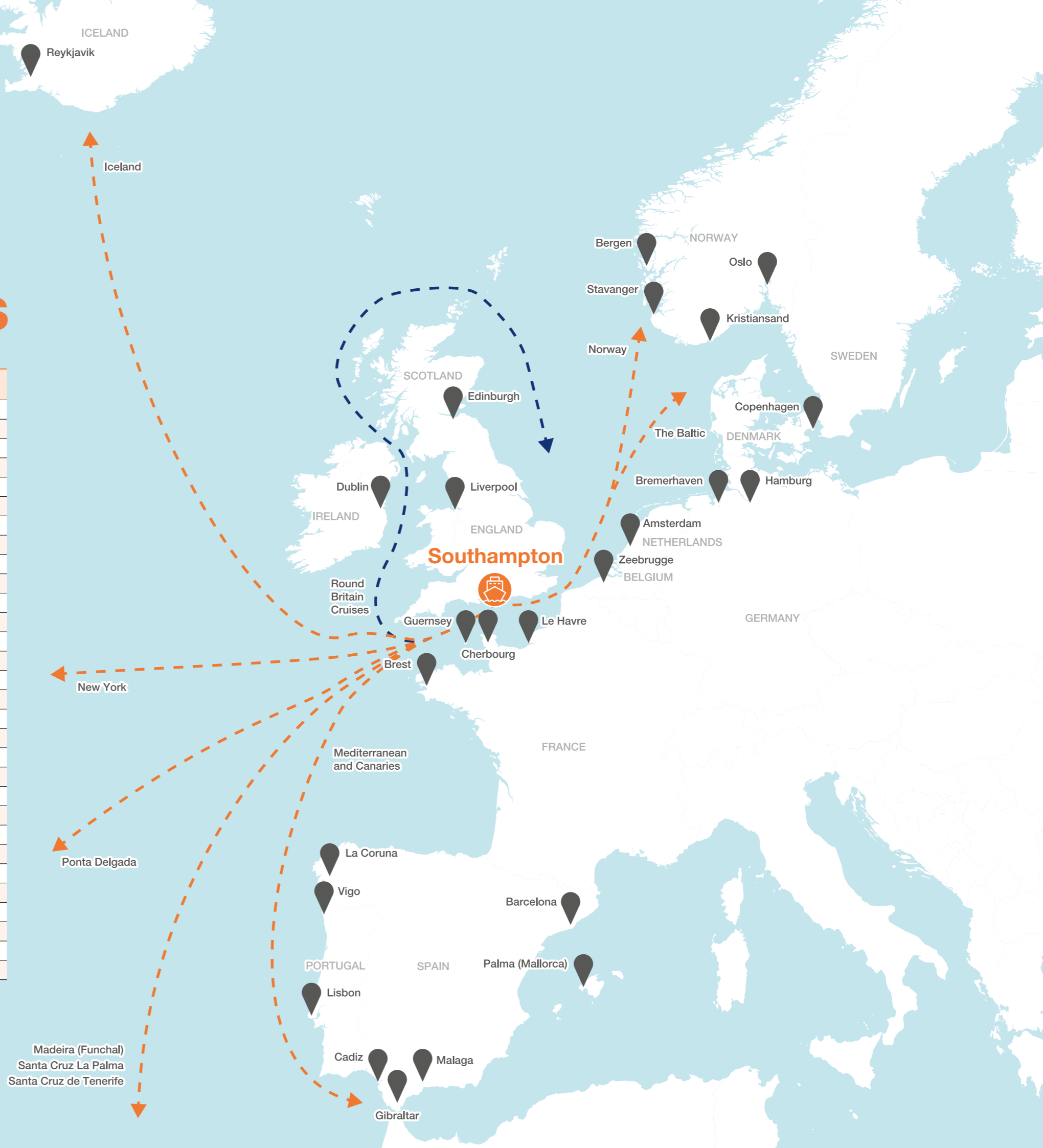
Southampton's location on the UK's South coast, with excellent transport infrastructure, as well as strong working partnerships and more than 3,000 hotel beds in the city and surrounding area, ensures Southampton remains the premier place for cruise lines to showcase their ships to the UK and overseas markets.



# Cruise distances

	Distance to Southampton	Distance from Southampton
Amsterdam	293	305
Barcelona	1721	1752
Bergen	762	788
Bremerhaven	434	479
Brest	306	320
Cadiz	1148	1177
Cherbourg	91	91
Copenhagen	818	844
Dublin	445	432
Edinburgh	519	540
Gibraltar	1205	1234
Guernsey - St Peter Port	123	123
Hamburg	520	529
Kristiansand S	623	642
La Coruna	585	592
Le Havre	109	109
Lisbon	924	949
Liverpool	513	505
Madeira (Funchal)	1341	1346
Malaga	1263	1292
New York	3199	3185
Oslo	766	785
Palma (Mallorca)	1656	1685
Ponta Delgada	1344	1344
Reykjavik	1326	1320
Santa Cruz La Palma	1571	1576
Santa Cruz de Tenerife	1575	1575
Stavanger	643	669
Vigo	701	726
Zeebrugge	205	211

Notes:  
 1. Distance shown in nautical miles.  
 2. All distances shown are approximate berth to berth distances (not pilot station to pilot station).  
 3. All distances for Southampton are calculated via Nab Tower.  
 4. To/from distances provided to take into account traffic separate schemes etc.



# Investing in the future of cruise



Solar arrays installed across the Port of Southampton

**The Port of Southampton is leading the way in investing in the future of cruise.**

Continuous investment in cruise infrastructure, the port road network and sustainable technologies keeps the Port of Southampton one step ahead of cruise lines' needs and supports the growth of the cruise industry.

Investment of £80 million in the last five years has strengthened cruise infrastructure. Two of Southampton's cruise terminals are fitted with Shore Power for zero emissions at berth, and Liquefied Natural Gas (LNG) bunkering is offered at another.

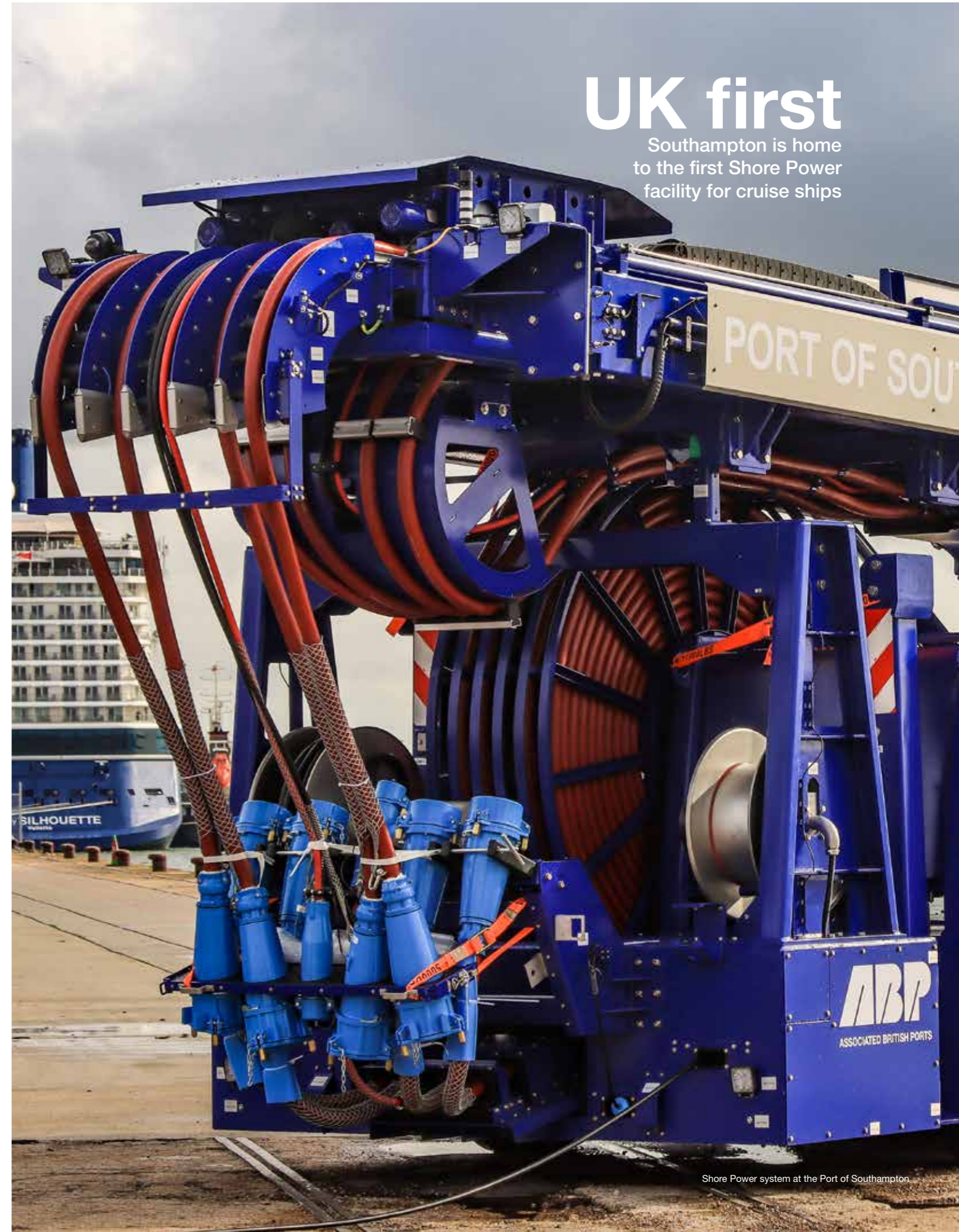
Roof-mounted solar arrays can be seen across the port. The port aims to generate as much of its own power as possible.



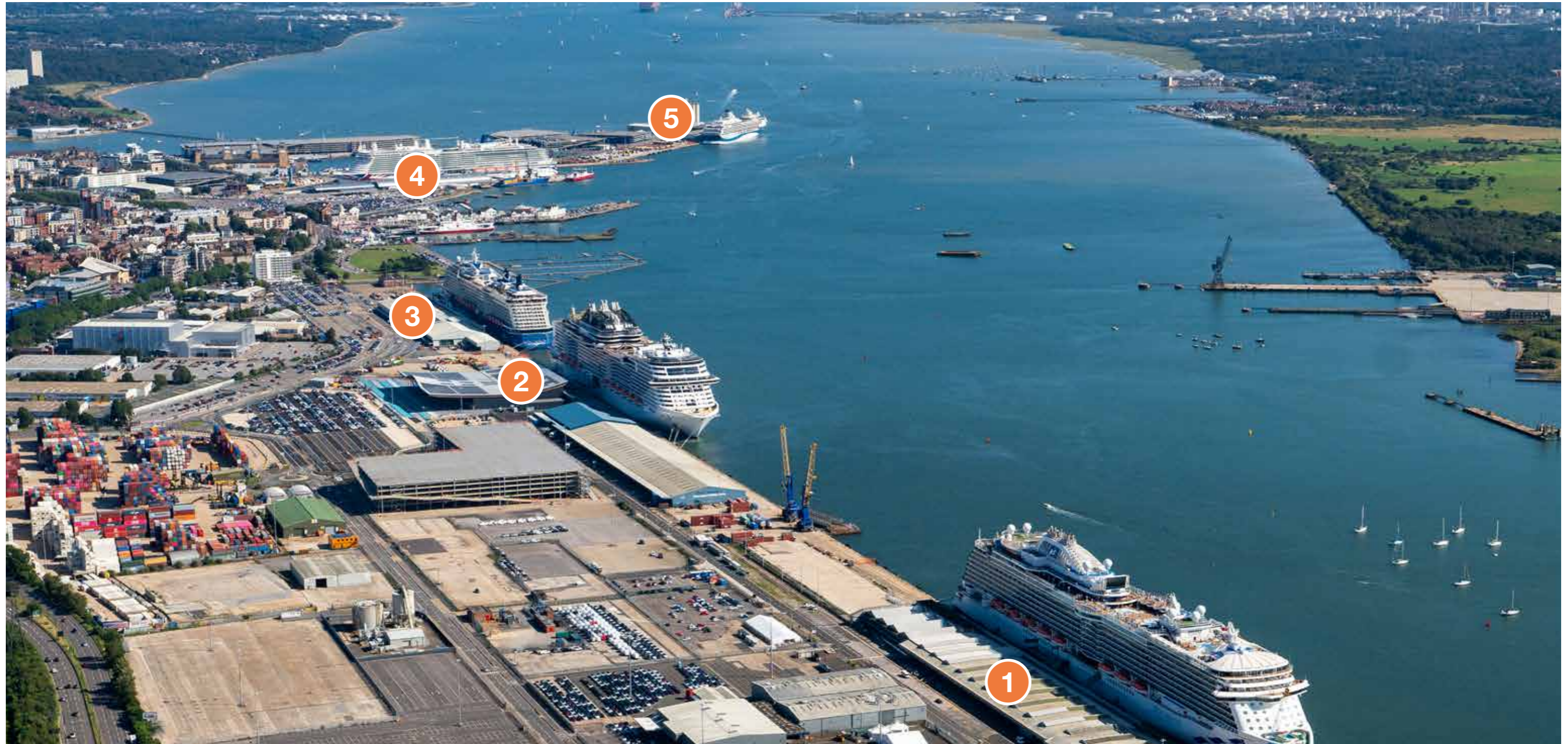
P&O Cruises' LNG-powered ship Iona at Ocean Cruise Terminal

# UK first

Southampton is home to the first Shore Power facility for cruise ships



Shore Power system at the Port of Southampton



The Port of Southampton

# Cruise terminals

The Port of Southampton offers five world-class cruise terminals.

A dedicated team works with partners to tailor each terminal to the needs of each cruise line. The port facilitates alternative fuelling, with LNG available via barge at Ocean Cruise Terminal. Horizon Cruise Terminal and Mayflower Cruise Terminal are the first cruise terminals in the UK to offer Shore Power for ships with the right onboard connectivity.

**1** **Mayflower Cruise Terminal**  
106 Berth, Western Docks SO15 1HJ

**2** **Horizon Cruise Terminal**  
102 Berth, Western Docks SO15 1AW

**3** **City Cruise Terminal**  
101 Berth, Western Docks SO15 1HJ

**4** **Ocean Cruise Terminal**  
46/47 Berth, Eastern Docks SO14 3QN

**5** **QEII Cruise Terminal**  
38/39 Berth, Eastern Docks SO14 3GG





Horizon Cruise Terminal  
Picture credit: Brymor Group



Ocean Cruise Terminal



ABParking car park

# Cruise facilities

**Each dedicated terminal has undergone multi-million pound refurbishments, enabling the port to cater for the world's largest vessels.**

The port's newest facility, Horizon Cruise Terminal, was a £55 million investment opened in 2021 by the Maritime Minister.

The team optimises infrastructure and resources to meet the requirements of operators and guests.

ABParking, owned and operated by ABP, is the official on-port parking provider, offering secure parking directly adjacent to the terminal. ABParking delivers tailored services for cruise line partners and guests, including terminal and shuttle long stay parking. ABParking has been awarded the prestigious Park Mark Safer Parking Award, ensuring guests' peace of mind.

## ABParking

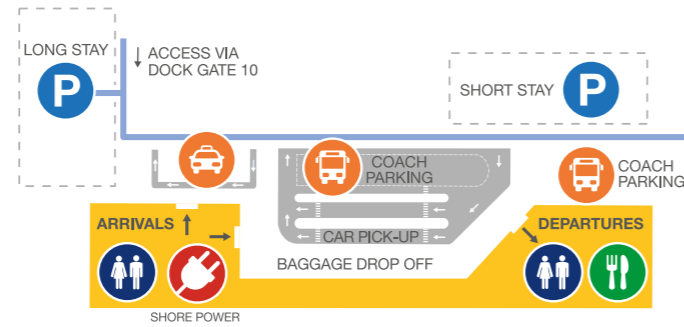
OFFICIAL CRUISE CAR PARKING  
IN THE PORT OF SOUTHAMPTON

Terminal	QEII Cruise Terminal	Ocean Cruise Terminal	City Cruise Terminal	Horizon Cruise Terminal	Mayflower Cruise Terminal
Location	38 Berth Eastern Docks	46 Berth Eastern Docks	101 Berth Western Docks	102 Berth Western Docks	106 Berth Western Docks
Max LOA	360 m	360 m	400 m	400 m	400 m
Advertised draft	10.5 m	10.5 m	10.5 m	10.5 m	11.7 m
Ship-to-shore walkway	1	2	2	2	1
Check-in desks	36	40	50	52	36
Passenger seating	1,000	1,000	500	1,000	700
Baggage hall	Yes	Yes	Yes	Yes	Yes
Bar and café	Yes	Yes	Yes	Yes	Yes
Coach bays *overflow in addition	18*	38	25	27	14*
Taxi rank	Yes	Yes	Yes	Yes	Yes
Drop-off lanes	Yes	Yes	Yes	Yes	Yes
Short and long stay car parking	Yes	Yes	Yes	Yes	Yes
7.5 v electric car charging points in short stay	Yes	Yes	Yes	Yes	Yes
Secure stores facilities	Yes	Yes	Yes	Yes	Yes
Distance from town centre	1.9 km	1.4 km	1.2 km	1.2 km	2.5 km
Passenger /crew x-ray	7	10	12	12	8
Baggage x-ray	3	4	6	6	4



## Mayflower Cruise Terminal

106 Berth, Western Docks SO15 1HJ



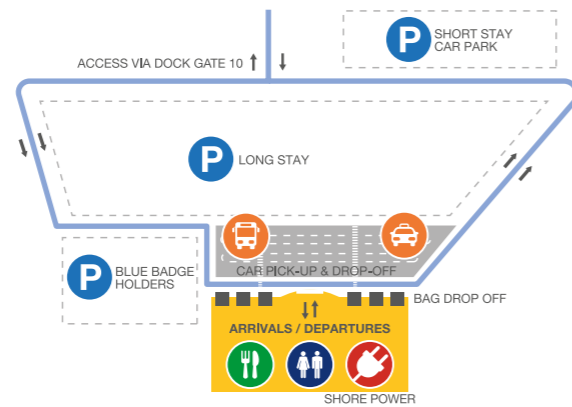
## Ocean Cruise Terminal

46/47 Berth, Eastern Docks SO14 3QN



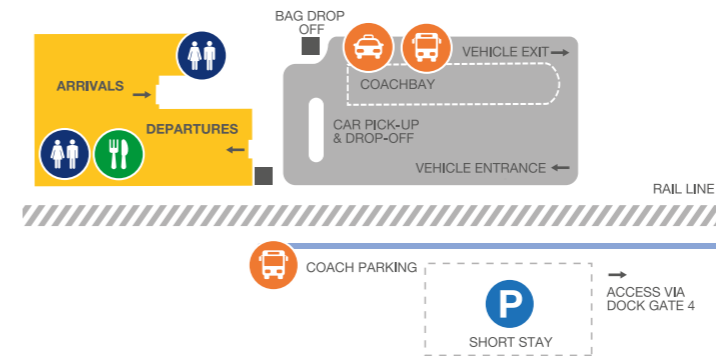
## Horizon Cruise Terminal

102 Berth, Western Docks SO15 1AW



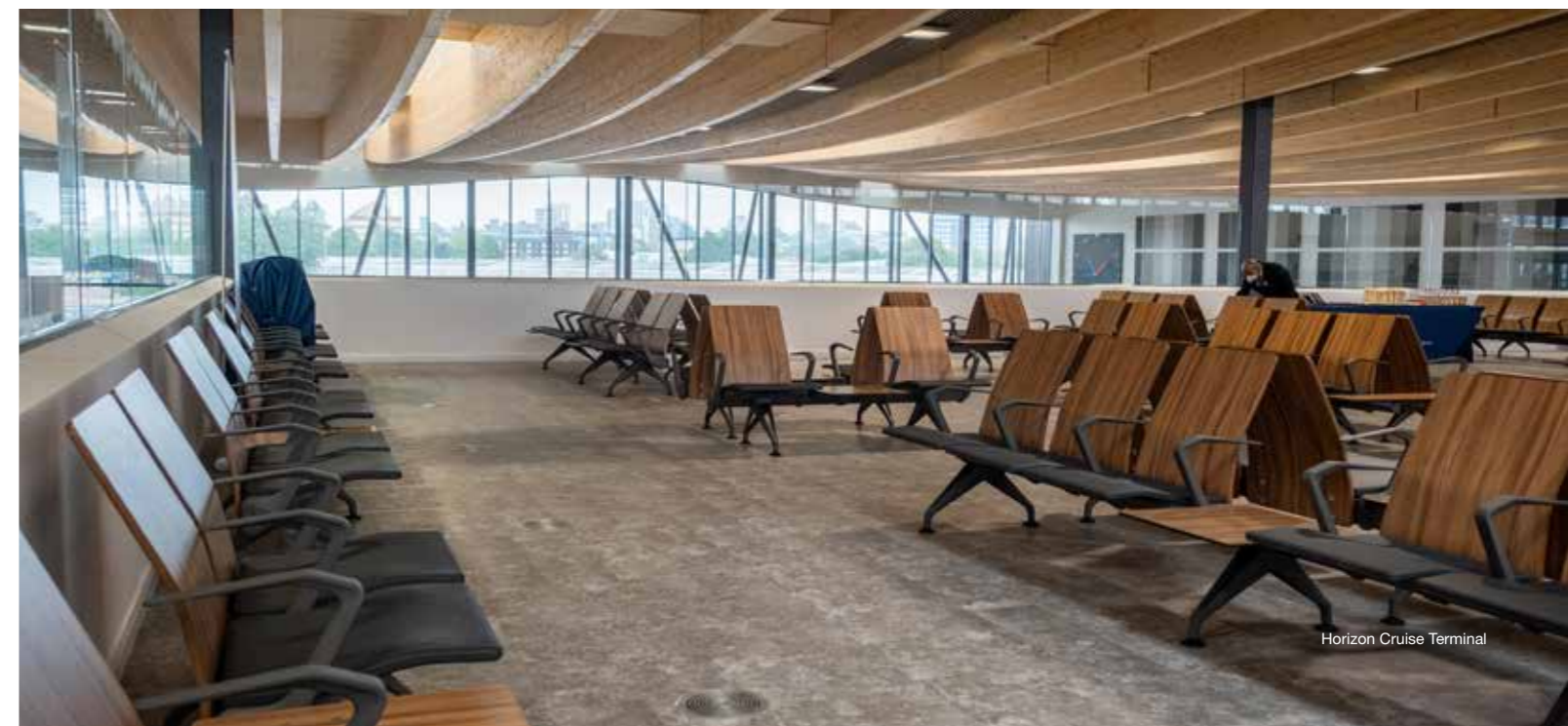
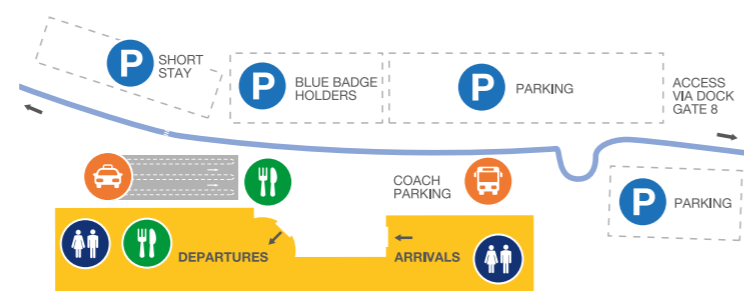
## QEI Cruise Terminal

38/39 Berth, Eastern Docks SO14 3GG



## City Cruise Terminal

101 Berth, Western Docks SO15 1H



# Connectivity

**Southampton has unrivalled connectivity by sea, land and air, making access to and from the port effortless.**

Heathrow and Gatwick international airports are just over an hour away, connecting Southampton to international passenger markets.

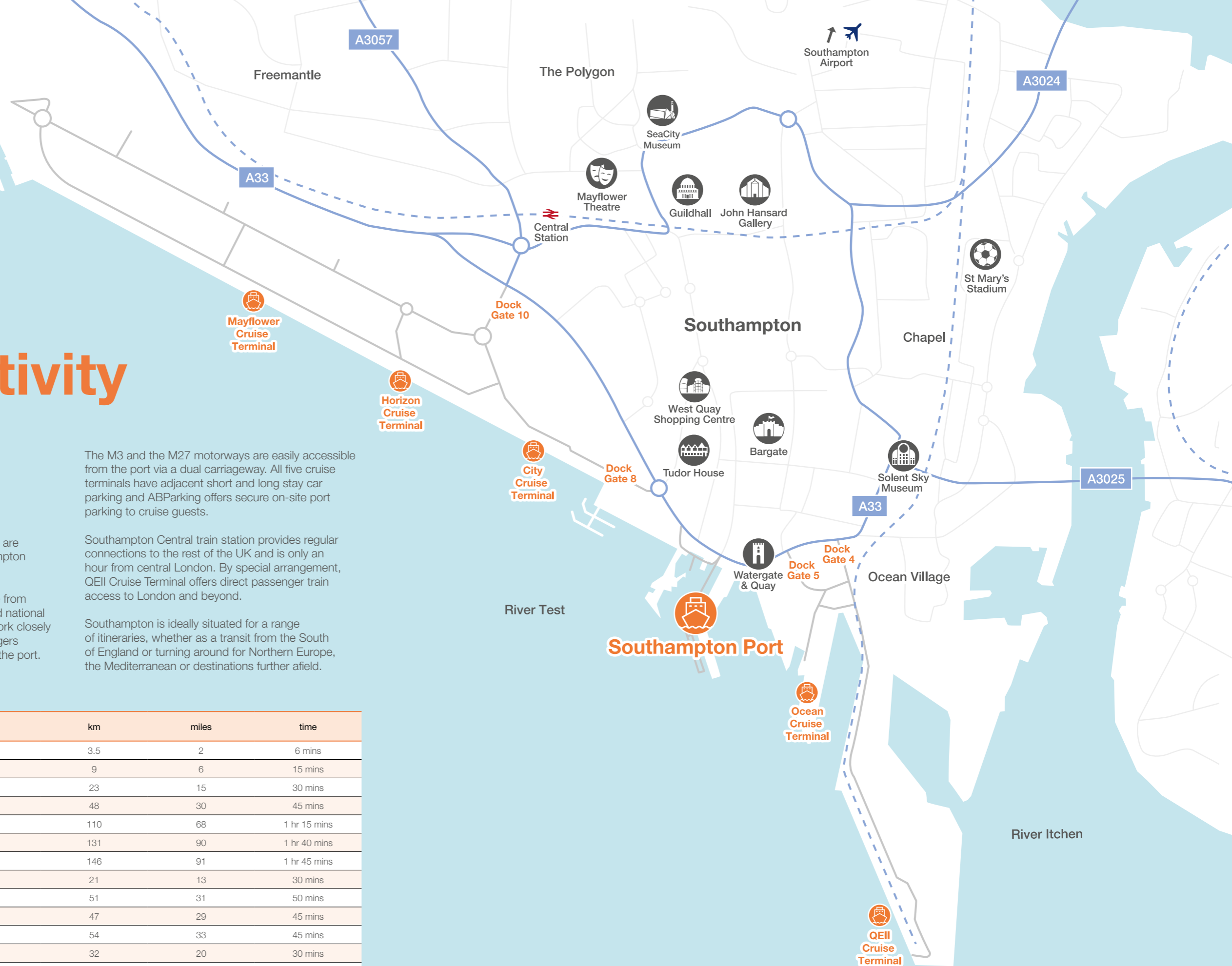
Southampton Airport is just a short distance from the port, offering short-haul international and national flights. Southampton Airport continues to work closely with cruise lines to ensure fly-cruise passengers experience a seamless journey to and from the port.

The M3 and the M27 motorways are easily accessible from the port via a dual carriageway. All five cruise terminals have adjacent short and long stay car parking and ABParking offers secure on-site port parking to cruise guests.

Southampton Central train station provides regular connections to the rest of the UK and is only an hour from central London. By special arrangement, QEII Cruise Terminal offers direct passenger train access to London and beyond.

Southampton is ideally situated for a range of itineraries, whether as a transit from the South of England or turning around for Northern Europe, the Mediterranean or destinations further afield.

Distance from the port	km	miles	time
Central Railway Station	3.5	2	6 mins
Southampton Airport	9	6	15 mins
Winchester	23	15	30 mins
Bournemouth Airport	48	30	45 mins
Heathrow	110	68	1 hr 15 mins
Central London	131	90	1 hr 40 mins
Gatwick	146	91	1 hr 45 mins
New Forest National Park	21	13	30 mins
Stonehenge	51	31	50 mins
Jane Austen's House Museum	47	29	45 mins
Bournemouth	54	33	45 mins
Portsmouth	32	20	30 mins
The Isle of Wight	23	15	30 mins
Central Southampton	2.5	1.5	3 mins



# Plymouth and Teignmouth



Regent Seven Seas Cruises' Seven Seas Voyager

## The gateway to Devon and Cornwall

Sail into the Plymouth sound, one of the world's finest natural harbours, where a range of cruise vessels can be accommodated. From small and medium vessels via Trinity Pier and West Wharf, or larger vessels up to 295m LOA via the anchorage. Passengers can enjoy access to excursions via the port facility or retrace the path of the pilgrims by walking the cobbled streets of the Barbican.

Teignmouth offers a more intimate experience for smaller cruise vessels berthing on the River Teign up to 120m LOA and 4.5m in draft.

## Key contacts

**Richard Butler**  
Commercial Manager

**T: 02920 835063**  
**E: richard.butler@abports.co.uk**



Plymouth Hoe



Dartmoor National Park



Eden Project

## Connectivity

Both Plymouth and Teignmouth are close to the A38 Devon expressway, linking Plymouth to the M5 at Exeter. Plymouth and Teignmouth railway stations are less than a mile from the ports. Exeter Airport is the closest commercial airport to both ports.

Plymouth			
Location	km	miles	time
Buckland Abbey	16	10	28 mins
Dartmoor National Park	12	8	22 mins
Dartmouth	53	33	1 hr 5 mins
Exeter Airport	78	49	1 hour
Exeter City Centre	72	45	1 hour
Mayflower Steps	2	1	6 mins
National Marine Aquarium	3	2	9 mins
Plymouth City Centre	2	1	4 mins
Plymouth Hoe	1	1	3 mins
Plymouth Train Station	2	1	5 mins
The Barbican, Plymouth	2	1	6 mins
Eden Project	60	37	1 hour

Teignmouth			
Location	km	miles	time
Compton Castle	18	11	32 mins
Dartmoor National Park	18	11	28 mins
Dartmouth	43	27	1 hr 5 mins
Dawlish Warren Nature Reserve	10	6	16 mins
Exeter Airport	30	19	27 mins
Exeter City Centre	24	15	27 mins
Greenway	27	17	48 mins
Plymouth City Centre	62	39	54 mins
Shaldon Beach	2	1	9 mins
Stover Country Park	15	10	23 mins
Teignmouth Town Centre	0	0	3 mins
Teignmouth Train Station	0	0	5 mins

## Cruise facilities

	Length Overall	Moulded Beam	Extreme Beam	Advertised Depth	Under Keel Clearance Required	Approximate GT
Plymouth - Alongside West Wharf	205m	Unrestricted	Unrestricted	8.5m	1m	42,000
Plymouth - Anchorage	295m	Unrestricted	Unrestricted	8.5m	1m	90,000
Plymouth - Trinity Pier	120m	Unrestricted	Unrestricted	5.3m	1m	-
Teignmouth - Alongside	120m	Unrestricted	Unrestricted	5.5m	1m	2,100

Other facilities: Pilotage, waste disposal, ISPS, bunkering of fresh water

# South Wales



Hurtigruten MS Fridtjof Nansen

**ABP's ports of Swansea, Cardiff and Newport offer passengers direct access to the rich heritage of Wales' three major cities and the spectacular surroundings of the Brecon Beacons and Gower Peninsula.**

With more castles per square mile than anywhere else in the world, there is an abundance of award-winning cultural attractions for passengers to experience. Step back 2,000 years in Cardiff city's very own medieval castle, or enjoy the Edwardian beauty of Dyffryn Gardens. Half and full day coach excursions offer passengers the chance to visit 12th century Tintern Abbey or a variety of museums and key national attractions.

## Key contacts

**Richard Butler**  
Commercial Manager

**T: 02920 835063**  
**E: richard.butler@abports.co.uk**



National Museum Wales



Wales Millennium Centre



Brecon Beacons National Park

## Connectivity

ABP's South Wales ports have great links to their respective city centres and the M4 motorway. From the M4 you can easily access the whole of South Wales, making these ports the perfect destination for exploring the beauty and heritage of the area. Cardiff Airport is the closest commercial airport to all three ports.

### Cardiff

Location	km	miles	time
Cardiff City Centre	2.5	1.5	5 mins
Cardiff Bay	1.6	1	3 mins
Cardiff Central Railway Station	3.2	2	7 mins
Cardiff Airport	21	13	25 mins
Cardiff Heliport	5	3	9 mins
Big Pit National Coal Museum	50	31	55 mins
Cardiff Castle	4	2.5	10 mins
Gower Peninsula	94	58.5	1 hr 15 mins
Tredegar House	22	13.5	30 mins
The Royal Mint	26	16	25 mins
Newport City Centre	25	16	29 mins
Swansea City Centre	70	44	50 mins

### Newport

Location	km	miles	time
Newport City Centre	3.2	2	7 mins
Newport Railway Station	4	2.5	10 mins
Cardiff Airport	41	26	40 mins
Big Pit National Coal Museum	29	18	38 mins
Cardiff Castle	21	13.5	25 mins
Gower Peninsula	102	64	1 hr 20 mins
Tredegar House	5	3	10 mins
The Royal Mint	22	22	30 mins
Cardiff City Centre	21	13.5	25 mins
Swansea City Centre	80	50	1 hour

### Swansea

Location	km	miles	time
Swansea City Centre	2	1.2	4 mins
Swansea Railway Station	2.5	1.5	5 mins
Cardiff Airport	72	45	55 mins
Swansea Airport	14.5	9	25 mins
Big Pit National Coal Museum	72	45	1 hr 5 mins
Cardiff Castle	66	41	55 mins
Gower Peninsula	21	13	35 mins
Tredegar House	77	48	55 mins
The Royal Mint	56	35	45 mins
Cardiff City Centre	66	41	55 mins
Newport City Centre	80	50	1 hour

# South Wales



Three Cliffs Bay, Gower

## Cruise facilities

	Length Overall	Moulded Beam	Extreme Beam	Advertised Depth	Maximum Draft in Dock*	Approximate GT
Newport - South Dock	244m	30.1m	per vl review	11m	10.3m	n/a
Cardiff - Queen Alexandra Dock	198m	27m	per vl review	11m	10.5m	n/a
Swansea - Kings Dock	200m	26.2m	per vl review	10.5m	10m	n/a

Other facilities: Pilotage, waste disposal, ISPS, bunkering of fresh water

\*Subject to advertised tidal parameters



Cardiff Castle

# Barrow



Swan Hellenic Minerva II



Lake Windermere



Furness Abbey

The Port of Barrow is close to the English Lake District, a UNESCO World Heritage Site.

## Connectivity

The Port of Barrow is located just over 20 miles from Lake Windermere, England's largest lake. The A590 is the most direct route for accessing the southern lakes or the A5087 provides a scenic coastal route to pick up the A590 at the historic market town of Ulverston.

Location	km	miles	time
Manchester Airport	176	110	2 hours
Barrow Railway Station	4.8	3	8 mins
Barrow Town Centre	3.2	2	5 mins
Dock Museum	4.8	3	8 mins
Furness Abbey	8	5	15 mins
Southern Lakes	35.2	22	40 mins
Holker Hall	36.8	23	45 mins
Bowness (Beatrix Potter)	44.8	28	55 mins
Keswick	80	50	1 hr 30 mins

## The Port of Barrow is the maritime gateway to the English Lake District, offering tailored cruise facilities and a breathtaking cruise destination.

With 16 major lakes surrounded by magnificent mountains and fells, the Lake District is the largest of the 13 national parks in England and Wales. The Lake District was home to the poet William Wordsworth and the writer Beatrix Potter. In addition to the spectacular scenery, the area has an abundance of castles and stately homes for visitors to enjoy, as well as many museums and quaint market towns to explore.

## Key contacts

**Richard Butler**  
Commercial Manager

**T: 02920 835063**  
**E: richard.butler@abports.co.uk**

## Cruise facilities

	Length Overall	Moulded Beam	Extreme Beam	Advertised Depth	Under Keel Clearance Required	Approximate GT
Barrow - Alongside	150m*	36m	36m	8.5m	1m	35,000

Other facilities: Pilotage, waste disposal, ISPS, bunkering of fresh water

\*Up to 200m subject to assessment

# Ayr and Troon



Noble Caledonia MS Island Sky

## Ayr and Troon are at the entrance to the Firth of Clyde on Scotland's stunning West Coast, with great proximity to South West Scotland.

They are both popular ports of call for cruise ships, offering easy access to some of Scotland's best known tourist attractions. They have excellent transport connections by road, rail and air.

Ayr has received many cruise vessels over the years, utilising the sheltered anchorage position. It has a dedicated pontoon that can accommodate up to two tenders and leads into a marquee reception area offering quality 'Made in Scotland' products and a tourist information service. Ayr also offers ample marshalling and parking areas for coaches, taxis and cars and is only a short distance from the town centre.

## Key contacts

**Richard Butler**  
Commercial Manager

**T: 02920 835063**  
**E: richard.butler@abports.co.uk**



Pollok House



Turnberry Golf Course



Edinburgh Castle

## Connectivity

Both Ayr and Troon are served by the mainline rail network and international airports of Glasgow and Edinburgh. Both have easy access to Scotland's motorway network, with the M77 to Glasgow and M8 to Edinburgh for travel to the most highly populated parts of Scotland. There is an excellent rail link connecting the towns and airports. Glasgow Prestwick and Glasgow International Airport are within easy reach.

Port of Ayr			
Location	km	miles	time
Ayr Town Centre	1.2	0.8	3 mins
Ayr Railway Station	2.1	1.3	5 mins
Prestwick Airport	6.1	3.8	15 mins
Robert Burns Birthplace Museum	5.8	3.6	11 mins
Culzean Castle & Country Park	23.8	14.8	30 mins
Dumfries House	23.1	14.4	25 mins
Whisky Experience & Shop	21.1	13.2	24 mins
Burrell Collection	52.8	33	44 mins

Port of Troon			
Location	km	miles	time
Troon Town Centre	1.9	1.2	5 mins
Troon Railway Station	2.6	1.6	7 mins
Prestwick Airport	9.5	5.9	15 mins
Robert Burns Birthplace Museum	21.6	13.4	25 mins
Culzean Castle & Country Park	37.6	23.3	45 mins
Dumfries House	33.6	20.9	40 mins
Whisky Experience & Shop	35.2	22.5	39 mins
Burrell Collection	49.9	31.2	42 mins

## Cruise facilities

	Length Overall	Moulded Beam	Extreme Beam	Advertised Depth	Under Keel Clearance Required	Approximate GT
Ayr - Alongside	110m	Unrestricted	Unrestricted	6.2m	1m	4,000
Ayr - Anchorage	Unrestricted	Unrestricted	Unrestricted	6.2m	1m	4,000
Troon - Alongside	120m	Unrestricted	Unrestricted	6.2m	1m	4,500

**Other facilities:** Pilotage, waste disposal, ISPS, bunkering of fresh water



# Hull



MV Astoria, run by CMV Cruises until 2020, calling at ABP's Port of Hull

## The Port of Hull offers bespoke cruise facilities and convenient access to Yorkshire and Lincolnshire and all they have to offer.

ABP Hull provides fully enclosed docks, riverside terminals and extensive facilities including efficient baggage handling, 24-hour security, pick-up/drop-off, coach parking and shuttle bus services.

The historic city of Hull offers an assortment of historical sights, activities and excursions.

Three of Yorkshire's most vibrant and cosmopolitan cities are just over an hour's drive away. Leeds, Sheffield and York offer fantastic accommodation, entertainment for all the family and outstanding architecture.

### Key contacts

**Paul Hatley**  
Commercial Manager

**T: 01482 327171**  
**E: paul.hatley@abports.co.uk**



York, York Minster



The Deep, Hull

### Connectivity

Situated 2km from the city centre and just over an hour's drive from Humberside Airport and Doncaster Sheffield Airport, the port is well located for turnaround cruises to the European Continent and the Baltic Sea. Hull also lends itself to domestic cruises as a port of call, owing to its convenient location on the East Coast, which is less than 30km from the mouth of the Humber Estuary.



Castle Howard



International Bomber Command Centre

Location	km	miles	time
Central Railway Station	6	3.7	12 mins
Airport (Humberside)	80	49.6	1 hour
Airport (Doncaster Sheffield)	40	24.6	38 mins
Airport (Manchester)	183	114	1 hr 50 mins
York City Centre	79	49.3	1 hr 11 mins
Lincoln City Centre	75	46.1	1 hr 4 mins
Leeds City Centre	101	62.7	1 hr 8 mins
Sheffield City Centre	110	68.5	1 hr 16 mins
Beverley	20	12.4	28 mins
Humber Bridge	16	10	18 mins
Hull Maritime Museum	6.1	3.8	12 mins
Streetlife Museum of Transport	5.1	3.2	10 mins
The Deep	5	2.9	8 mins
Hull Truck Theatre	6	3.7	12 mins
Hull New Theatre	5.3	3.3	11 mins
Burton Constable Hall	17	10.6	26 mins
Sewerby Hall	53	33.2	59 mins

### Cruise facilities

	Length Overall	Moulded Beam	Extreme Beam	Advertised Depth	Under Keel Clearance Required	Approximate GT
Hull - Alongside King George Dock	199m	25.5m	25.5m	11.3m	0.9m	27,000

**Other facilities:** Pilotage, waste disposal, ISPS, bunkering of fresh water

# East Anglia



Noble Caledonia MS Island Sky at Lowestoft

**The Ports of Ipswich and Lowestoft are ideally located on the East Coast to access the many attractions of East Anglia and beyond.**

East Anglia is made up of the coastal counties of Norfolk, Suffolk and Essex, along with Cambridgeshire, and is a perfect destination for days out, short breaks and holidays, at any time of the year. The beautiful countryside, including the unique Norfolk Broads, Constable Country and the Brecks and Thetford Forest, is punctuated by pretty market towns and villages.

On East Anglia's 500 miles of coast, you'll discover enormous sandy beaches, undulating cliffs, creeks and saltmarsh, as well as the best birdwatching in the country. Visit to experience a wide range of culture, cutting-edge arts, a rich history and heritage, festivals and scores of family-friendly attractions.

## Key contacts

**Richard Butler**  
Commercial Manager

**T: 02920 835063**  
**E: richard.butler@abports.co.uk**



Cambridge University and Kings College Chapel



Norwich



The Broads



The seafront and beach at Aldeburgh

## Connectivity

The ports of Ipswich and Lowestoft are located within easy reach of Cambridge, Norwich and Bury St Edmunds, and with the ports close to the A12 and A14, there is direct access to the picturesque villages of Essex, Suffolk and Norfolk.

Ipswich			
Location	km	miles	time
Central Railway Station	3	2	6 mins
Stansted Airport	87	54	1 hr 10 mins
Central London	140	87	2 hr 5 mins
Norwich	75	46	1 hr 23 mins
The Broads	68	42	1 hr 13 mins
Ickworth House	52	32	49 mins
Cambridge	97	60.5	1 hr 20 mins
Sandringham	120	74	1 hr 50 mins
Imperial War Museum Duxford	105	65	1 hr 14 mins
Bury St Edmunds	50	31	1 hr 5 mins
Audley End	101	63	1 hr 17 mins

## Cruise facilities

	Length Overall	Moulded Beam	Extreme Beam	Advertised Depth	Under Keel Clearance Required	Approximate GT
Ipswich	155m	Unrestricted	Unrestricted	8.4m	1m	12,000
Lowestoft	125m	18m	18m	6.2m	1m	4,000

**Other facilities:** Pilotage, waste disposal, ISPS, bunkering of fresh water



# Contacts

## ABP Cruise

Associated British Ports Southampton  
Ocean Gate  
Atlantic Way  
Southampton  
SO14 3QN

**T:** 023 8048 8800  
**E:** [cruise@abports.co.uk](mailto:cruise@abports.co.uk)

[abports.co.uk/trades\\_sectors/cruises](http://abports.co.uk/trades_sectors/cruises)

## Rebekah Keeler

Head of Cruise

**E:** [rkeeler@abports.co.uk](mailto:rkeeler@abports.co.uk)

## ABParking

Owned by ABP and offering  
cruise car parking adjacent  
to the cruise terminals

**T:** 023 8048 8870  
**W:** [www.abparking.co.uk](http://www.abparking.co.uk)  
**E:** [parking@abports.co.uk](mailto:parking@abports.co.uk)

[www.abports.co.uk](http://www.abports.co.uk)



**ABP** | CRUISE